



PolyPak® Seals for Hydraulic Applications

Catalog EPS 5370_PolyPak

aerospace
climate control
electromechanical
filtration
fluid & gas handling
hydraulics
pneumatics
process control
sealing & shielding



ENGINEERING YOUR SUCCESS.

If you have questions about the products contained in this catalog, or their applications, please contact:



Engineered Polymer Systems Division

phone **801 972 3000**

fax **801 973 4019**

eps-ccare@parker.com

www.parker.com/eps

Care is taken in the preparation of this publication; however Parker shall not be responsible for a user's reliance on any inadvertent typographical errors or omissions. Information in this catalog is only accurate as of the date of publication. For more current information, please consult the Parker EPS Division website at **www.parker.com/eps**.

Offer of Sale

The items described in this document are hereby offered for sale by Parker Hannifin Corporation, its subsidiaries or its authorized distributors. This offer and its acceptance are governed by the provisions in the "Offer of Sale."

NOTE: Failure or improper selection or improper use of seals or related items can cause death, personal injury and property damage. Parker Hannifin shall not be liable for any incidental, consequential or special damages that result from use of the information contained in this publication.



FAILURE OR IMPROPER SELECTION OR IMPROPER USE OF THE PRODUCTS AND/OR SYSTEMS DESCRIBED HEREIN OR RELATED ITEMS CAN CAUSE DEATH, PERSONAL INJURY AND PROPERTY DAMAGE.

This document and other information from Parker Hannifin Corporation, its subsidiaries and authorized distributors provide product and/or system options for further investigation by users having expertise. It is important that you analyze all aspects of your application, including consequences of any failure and review the information concerning the product or system in the current product catalog. Due to the variety of operating conditions and applications for these products or systems, the user, through its own analysis and testing, is solely responsible for making the final selection of the products and systems and assuring that all performance, safety and warning requirements of the application are met.

The products described herein, including without limitation, product features, specifications, designs, availability and pricing, are subject to change by Parker Hannifin Corporation and its related companies at any time without notice.

© Copyright 2007, 2008, 2014, 2015, 2016 Parker Hannifin Corporation. All rights reserved. Extracts may only be taken with permission.

03/2015

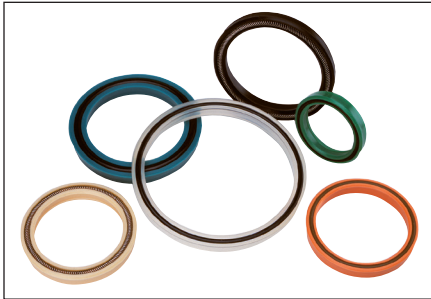


www.parker.com/eps

Parker Hannifin Corporation
Engineered Polymer Systems Division
Phone: 801 972 3000

Symmetrical PolyPak® Seal Profiles for Rod or Piston Applications

Catalog EPS5370_PolyPak



PolyPak® Sealing

Parker's PolyPak® seal is a patented precision molded multi-purpose seal. The Parker PolyPak combines an o-ring type synthetic rubber o-spring with a conventional lip-type seal to produce a unique sealing device capable of sealing both vacuum, high and low pressure.

Conventional lip seals, such as the standard u-cups are prone to leakage under low pressure because little or no lip loading is inherent in the basic seal design. The Parker PolyPak however, is a squeeze type seal and provides high sealability at low pressure. As system pressure increases, additional force is applied to the PolyPak's seal interface and as pressure continues to increase, lip loading is automatically increased to compensate for this higher pressure and thus maintain a positive, leak-free seal from hard vacuum to over 60,000 psi with proper design and auxiliary devices.

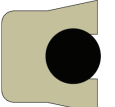



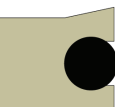



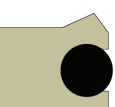



NOTE: Standard, Deep and Type B PolyPak Gland Dimension Table (Table 8, page 10) is provided as a guide to the user in building a PolyPak® seal part number.

Not all materials and sizes, or combinations thereof, are currently tooled.

For up-to-date tooling information, contact Parker Hannifin EPS Division, or your local authorized Parker Hannifin Engineered Materials Group authorized distributor.

Profiles

Table 1: Product Profiles

Series	Description	Application (Duty)				Page
		Light	Medium	Heavy	Pneumatic	
SPP 	Square Cross-Section O-ring Energized Lip Seal					4
DPP 	O-ring Loaded Lip Seal with Scraper Lip Design					6
BPP 	O-ring Energized Lip Seal with Beveled Lip Design					8

03/2015



In addition to providing superior sealing in vacuum, low and high pressure applications, the PolyPak seal offers a number of distinct advantages over conventional symmetrical or non-symmetrical u-cup seals including:

- The PolyPak's o-spring stabilizes the seal under extreme pressures, preventing seal lip distortion and rolling or twisting in the gland.
- At low or high temperature extremes, the o-spring maintains lip loading on both I.D. and O.D. of the seal interface.
- The PolyPak seal can be stretched or squeezed to accommodate oversize cylinder bores and undersize rods. As long as the seal cross-section is correct in relation to the radial groove dimensions, the PolyPak will compensate and maintain proper lip loading.
- The range of materials available to the user of the PolyPak seal insures the proper combination for abrasion, extrusion, temperature resistance and fluid compatibility which produces high sealability and long life.

PolyPak seals are available in three styles:

1. Standard PolyPak (SPP Profile)
2. Deep PolyPak (DPP Profile)
3. Type B PolyPak (BPP Profile)

Rod Sealing with PolyPak Seals

As a general rule, rod seals are more critical in nature than their companion piston seals. With increasing OEM requirements for "dry rod" capability, both to conserve system fluid and avoid leakage, the design and selection of the rod seal can be more challenging than its piston counterpart.

Parker recommends the use of the Type B PolyPak (BPP Profile) for rod seal applications due to its design features, including:

- Excellent film-breaking capability of the beveled lip design
- The higher level of lip loading provided by the Type B offers maximum sealability
- The long body of the design provides maximum stability

Piston Sealing with PolyPak Seals

Piston seals can be classified in two categories: single-acting and double-acting. The single acting seal is only required to seal in a single direction as system pressure is seen on only one end of the piston (return of the piston in a single-acting system is accomplished either by gravity or spring loading). The double-acting cylinder requires that the piston be sealed in both directions of stroke as system fluid is applied to one side or the other to achieve movement.

Please see the individual PolyPak profile pages for explanation and differentiation on selecting PolyPak profiles for piston applications.

PolyPak Material Combinations

PolyPak seals can be configured in numerous o-spring energizer and shell combinations. Table 2 represents "standard" combinations. Care should be taken to insure that both the PolyPak shell and its companion o-spring energizer are compatible with the system temperature, pressure, and fluid requirements.

Table 2. Standard Shell and O-spring Energizer Combinations for PolyPak Seals

PolyPak Shell	O-spring Energizer
Molythane®	70A Nitrile
PolyMyte®	70A Nitrile, 75A FKM
Nitroxile®	70A Nitrile
Ethylene Propylene	80A EPR
Fluorocarbon	75A FKM
All Plastic and Rubber	Metal O-spring

Parker's "smart" part numbering provides for varying standard and custom PolyPak shell and o-spring energizer material combinations. Please refer to the part number nomenclature tables and Technical Data in the PolyPak profile pages for PolyPak shell material options. See Table 3 for standard and custom o-spring energizer option details. For technical data and descriptions of Parker PolyPak seal materials, please refer to Section 3, [Catalog EPS5370](#).

Positively-Actuated Back-ups Option

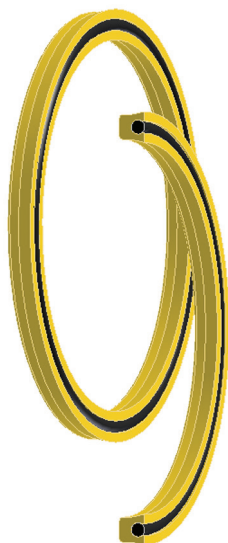
PolyPak seals can be designed with positively-actuated back-ups by designating that option in the part number. See Section 10, [Catalog EPS5370](#) for an explanation of the features of positively-actuated back-ups.

Table 3. PolyPak O-spring Energizers

Standard O-spring Energizer		
O-spring Energizer Code	Type of PolyPak	Description
-	Urethane (4615, 4622)	70A NBR o-spring energizer
	Rubber	Indicates that the o-spring material family is to match the rubber PolyPak shell material family. Example: XNBR 4263 PolyPak shell: code (“-”) indicates NBR o-ring EPR 4207 PolyPak shell: code (“-”) indicates EPR o-ring FKM 4208 PolyPak shell: code (“-”) indicates FKM o-ring FKM 4266 PolyPak shell: code (“-”) indicates FKM o-ring
	PolyMyte (4651)	must be replaced by a custom o-spring energizer code
Custom O-spring Energizers		
O-spring Energizer Code	Energizer Description	
C	Continuous o-ring	
E	General EPR o-ring	
J	General HNBR o-ring	
L	Canted coil, spring-loaded with oval spring cavity	
N	General nitrile o-ring	
R	Low swell nitrile o-ring	
S	Spring energizer with o-ring groove	
U	Geothermal EPR o-ring	
V	Fluorocarbon o-ring	
W	Nuclear grade EPR o-ring	
X	Premium grade low-temperature o-ring	
Y	Low temperature nitrile o-ring	

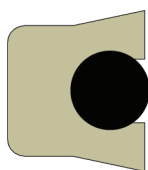
Symmetrical Seal SPP Profile, Standard PolyPak

Catalog EPS5370_PolyPak



SPP Profile, Standard PolyPak, Square Cross-Section O-ring Energized Lip Seal

Parker's Standard PolyPak is a squeeze seal with a symmetrical profile for use in either rod or piston applications. The standard Molythane shell provides high wear resistance and the o-ring energizer functions as a spring to maintain sealing contact under low pressure. The Standard PolyPak utilizes a scraper lip design formed by a precision trimming process. The scraper edge wipes both fluid film and contamination away from the seal. A wide selection of sizes and alternate compounds allow this profile to match up with many hydraulic applications. The Standard PolyPak is an economical choice as a stand alone rod or piston seal. With less squeeze force than the Deep or Type B profiles, the Standard PolyPak can be installed back to back, in separate glands, for bi-directional sealing. To protect against pressure trapping, it is recommended that the o-ring be removed from the Standard PolyPak facing the lower pressure side of the application.



Standard PolyPak Cross-Section

Technical Data

Standard Materials*	Temperature Range	Pressure Range†	Surface Speed
Shell			
P4615A90	-65°F to 200°F (-54°C to 93°C)	5000 psi (345 bar)	< 1.6 ft/s (0.5 m/s)
P4622A90	-65°F to 225°F (-54°C to 107°C)	5000 psi (345 bar)	< 1.6 ft/s (0.5 m/s)
Z4651D60	-65°F to 275°F (-54°C to 135°C)	7000 psi (482 bar)	< 1.6 ft/s (0.5 m/s)
N4263A90	-20°F to 275°F (-29°C to 135°C)	2000 psi (138 bar)	< 1.6 ft/s (0.5 m/s)
E4207A90	-65°F to 300°F (-54°C to 149°C)	2000 psi (138 bar)	< 1.6 ft/s (0.5 m/s)
V4208A90	-5°F to 400°F (-21°C to 204°C)	2250 psi (155 bar)	< 1.6 ft/s (0.5 m/s)
V4266A95	-5°F to 400°F (-21°F to 204°C)	2250 psi (155 bar)	< 1.6 ft/s (0.5 m/s)

Energizer

For Seals With...

4615 or 4622 PolyPak shell
4651 PolyPak shell
identified
Rubber PolyPak shell

Standard Energizer Material*

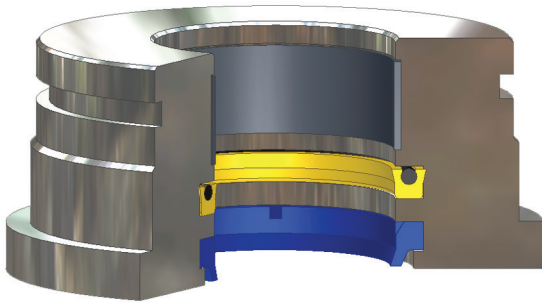
Standard energizer is a nitrile o-ring
O-spring energizer code must be

Standard energizer is an o-ring from the
same rubber material family as the shell

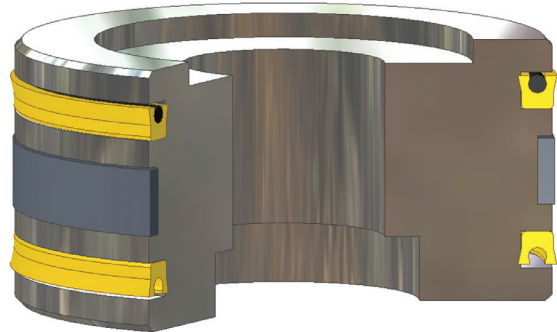
***Alternate Materials:** For custom energizer materials, see Table 3. For applications that may require an alternate shell material contact Parker.

†**Pressure Range** without wear rings (see Section 2, Catalog EPS5370).

03/2015



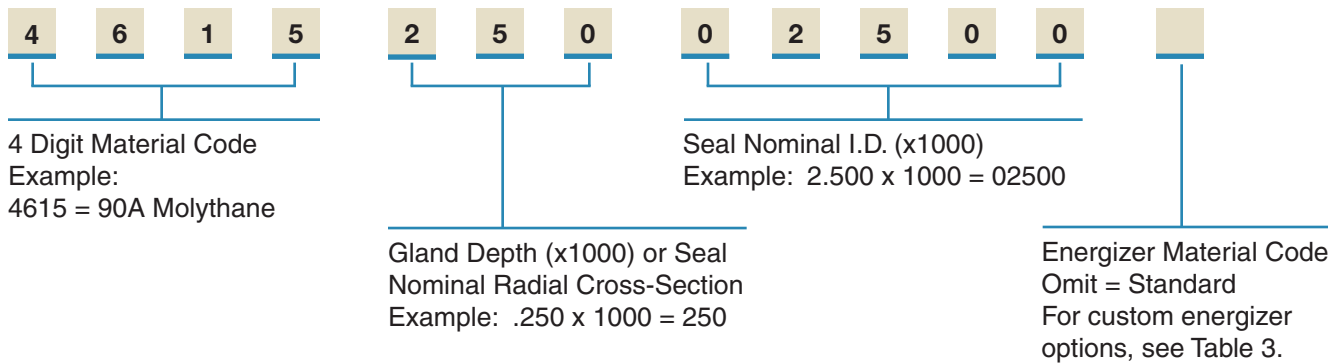
*Standard PolyPak installed
in Rod Gland*



*Standard PolyPak installed
in Piston Gland*

Part Number Nomenclature — Standard PolyPak Profile

Table 4. Standard PolyPak Profile — Inch

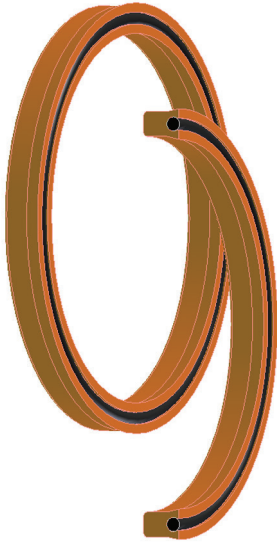


Gland Dimensions — Standard PolyPak Profile

Standard PolyPak gland dimensions are provided on in Table 8, page 10.

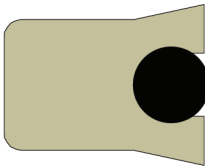
Symmetrical Seal DPP Profile, Deep PolyPak

Catalog EPS5370_PolyPak



DPP Profile, Deep PolyPak, O-ring Loaded Lip Seal with Scraper Lip Design

Parker's Deep PolyPak is a squeeze seal with a symmetrical profile for use in either rod or piston applications. Its rectangular shape ensures stability in the gland. The standard Molythane shell provides high wear resistance and the o-ring energizer functions as a spring to maintain sealing contact under low pressure or vacuum applications. The Deep PolyPak scraper lip design cuts fluid film and moves contamination away from the seal. The sharp edge of the lip is formed by a precision knife trimming process. A wide selection of sizes and alternate compounds allow this profile to match up with many hydraulic applications. The Deep PolyPak is an economical choice as a stand alone rod or piston seal. Deep PolyPak seals should not be installed back to back in bi-directional piston applications as a pressure trap between the seals may occur.



Deep PolyPak Cross-Section

Technical Data

Standard Materials*	Temperature Range	Pressure Range†	Surface Speed
Shell			
P4615A90	-65°F to 200°F (-54°C to 93°C)	5,000 psi (344 bar)	< 1.6 ft/s (0.5 m/s)
P4622A90	-65°F to 225°F (-54°C to 107°C)	5,000 psi (344 bar)	< 1.6 ft/s (0.5 m/s)
Z4651D60	-65°F to 275°F (-54°C to 135°C)	7,000 psi (482 bar)	< 1.6 ft/s (0.5 m/s)
N4263A90	-20°F to 275°F (-29°C to 135°C)	2,000 psi (137 bar)	< 1.6 ft/s (0.5 m/s)
E4207A90	-65°F to 300°F (-54°C to 149°C)	2,000 psi (137 bar)	< 1.6 ft/s (0.5 m/s)
V4208A90	-5°F to 400°F (-21°C to 204°C)	2250 psi (155 bar)	< 1.6 ft/s (0.5 m/s)
V4266A95	-5°F to 400°F (-21°C to 204°C)	2,250 psi (155 bar)	< 1.6 ft/s (0.5 m/s)

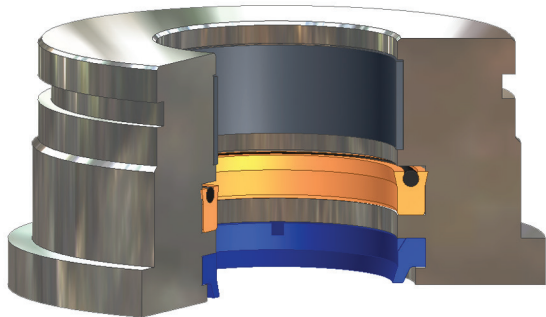
Energizer

For Seals With...	Standard Energizer Material*
4615 or 4622 PolyPak shell	Standard energizer is a nitrile o-ring
4651 PolyPak shell identified	O-spring energizer code must be
Rubber PolyPak shell	Standard energizer is an o-ring from the same rubber material family as the shell

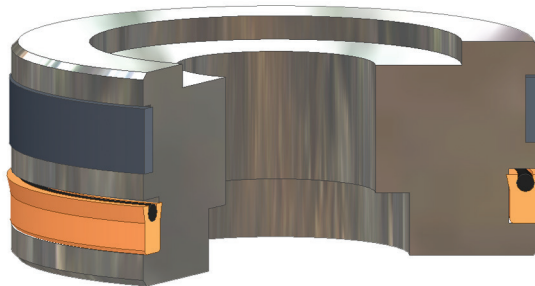
*Alternate Materials: For custom energizer materials, see Table 3. For applications that may require an alternate shell material contact Parker.

†Pressure Range without wear rings (see Section 2, Catalog EPS5370).

03/2015



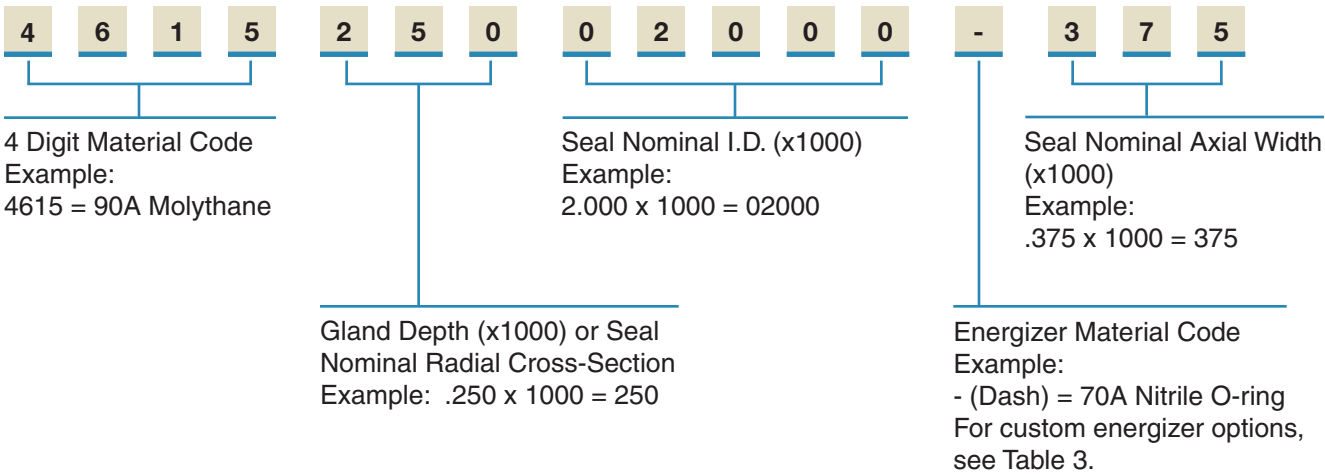
Deep PolyPak installed in Rod Gland



Deep PolyPak installed in Piston Gland

Part Number Nomenclature – Deep PolyPak Profile

Table 5. Deep PolyPak Profile – Inch



Gland Dimensions – Deep PolyPak Profile

Deep PolyPak gland dimensions are provided in Table 8, page 10.

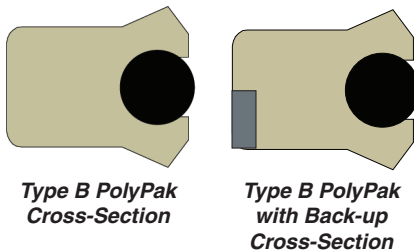
Symmetrical Seal BPP Profile, Type B PolyPak

Catalog EPS5370_PolyPak



BPP Profile, Type B PolyPak O-ring Energized Lip Seal with Beveled Lip Design

Parker's Type B PolyPak is a squeeze seal with a symmetrical profile for use in either rod or piston applications. The rectangular shape of its cross section ensures stability in the gland. The standard Molythane shell provides high wear resistance and the o-ring energizer functions as a spring to maintain sealing contact under low pressure or vacuum applications. The beveled lip design of the Type B PolyPak is excellent for cutting fluid film. The sharp beveled lip is formed by a precision knife trimming process. A wide selection of sizes and alternate compounds allow this profile to match up with many hydraulic applications. The Type B PolyPak is an economical choice as a stand-alone seal or can be used in tandem with a buffer seal. In piston applications, this seal will function as a unidirectional seal. Instead, for bi-directional piston sealing, incorporate a PIP ring (see Section 7, Catalog EPS5370). Type B PolyPaks should not be installed back to back, in bi-directional pressure applications, as a pressure trap between the seals may occur.



Technical Data

Standard Materials*	Temperature Range	Pressure Range†	Surface Speed
Shell			
P4615A90	-65°F to 200°F (-54°C to 93°C)	5,000 psi (344 bar)	< 1.6 ft/s (0.5 m/s)
P4622A90	-65°F to 225°F (-54°C to 107°C)	5,000 psi (344 bar)	< 1.6 ft/s (0.5 m/s)
Z4651D60	-65°F to 275°F (-54°C to 135°C)	7,000 psi (482 bar)	< 1.6 ft/s (0.5 m/s)
N4263A90	-20°F to 275°F (-29°C to 135°C)	7,000 psi (482 bar)	< 1.6 ft/s (0.5 m/s)
E4207A90	-65°F to 300°F (-54°C to 149°C)	2,000 psi (137 bar)	< 1.6 ft/s (0.5 m/s)
V4208A90	-5°F to 400°F (-21°C to 204°C)	2250 psi (155 bar)	< 1.6 ft/s (0.5 m/s)
V4266A95	-5°F to 400°F (-21°C to 204°C)	2,250 psi (155 bar)	< 1.6 ft/s (0.5 m/s)

Energizer

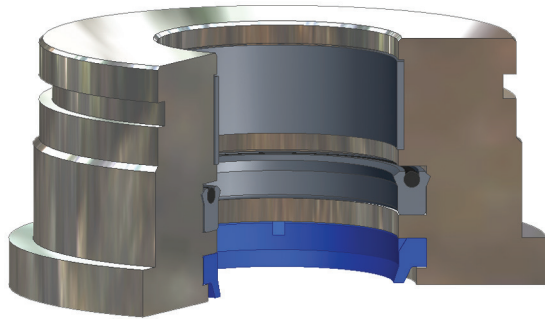
For Seals With...
4615 or 4622 PolyPak shell
4651 PolyPak shell identified
Rubber PolyPak shell

Standard Energizer Material*
Standard energizer is a nitrile o-ring
O-spring energizer code must be

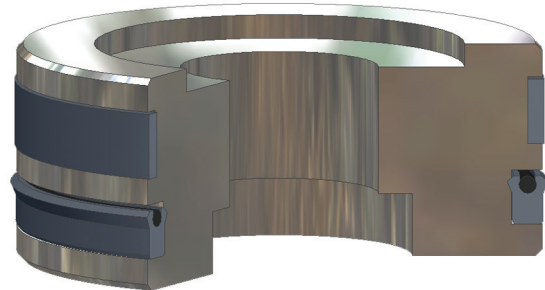
Standard energizer is an o-ring from the same rubber material family as the shell

***Alternate Materials:** For custom energizer materials, see Table 3. For applications that may require an alternate shell material contact Parker.

†Pressure Range without wear rings (see Section 2, Catalog EPS5370).
03/2015



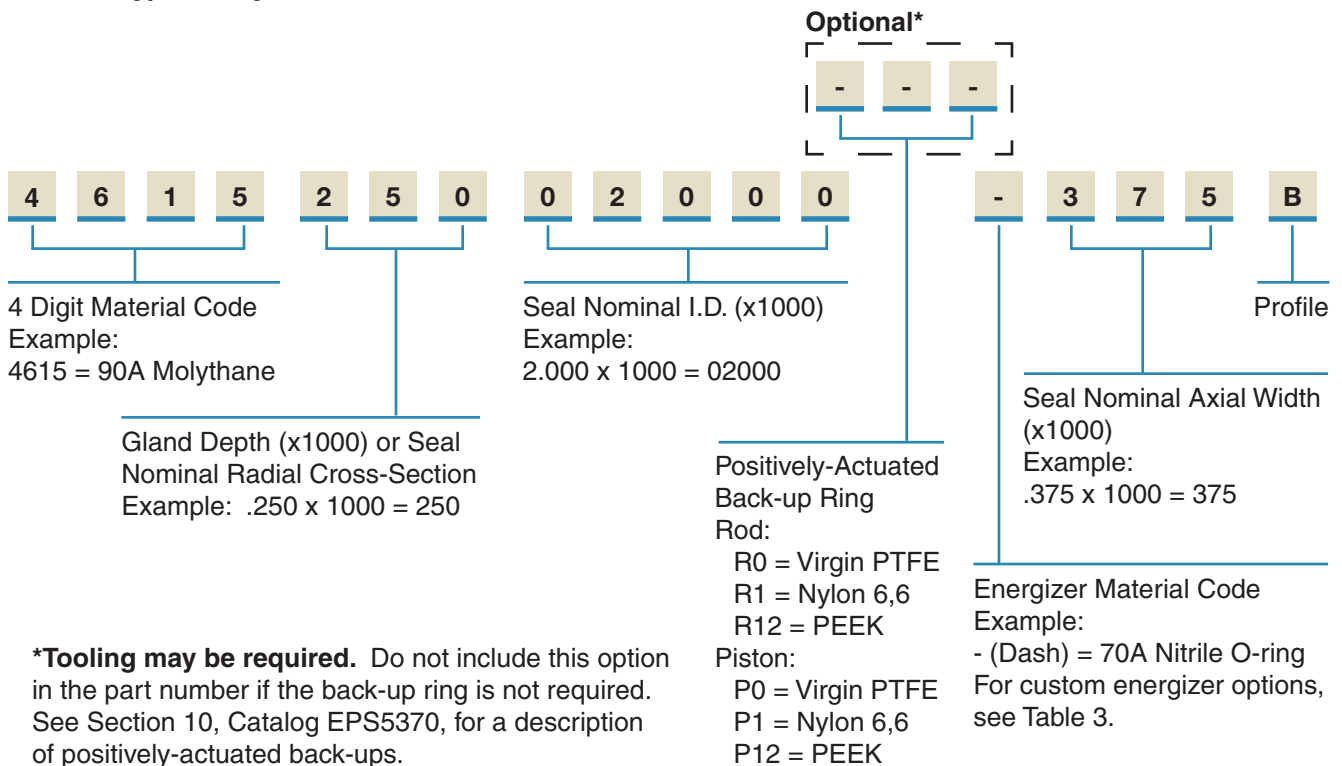
Type B PolyPak installed in Rod Gland



Type B PolyPak installed in Piston Gland

Part Number Nomenclature — Type B PolyPak Profile

Table 6. Type B PolyPak Profile — Inch



Gland Dimensions — Type B PolyPak Profile

Type B PolyPak gland dimensions are provided in Table 8, page 10.

Standard, Deep and Type B PolyPak Gland Dimensions

Catalog EPS5370_PolyPak

Gland Dimensions – Standard, Deep and Type B PolyPak Profiles

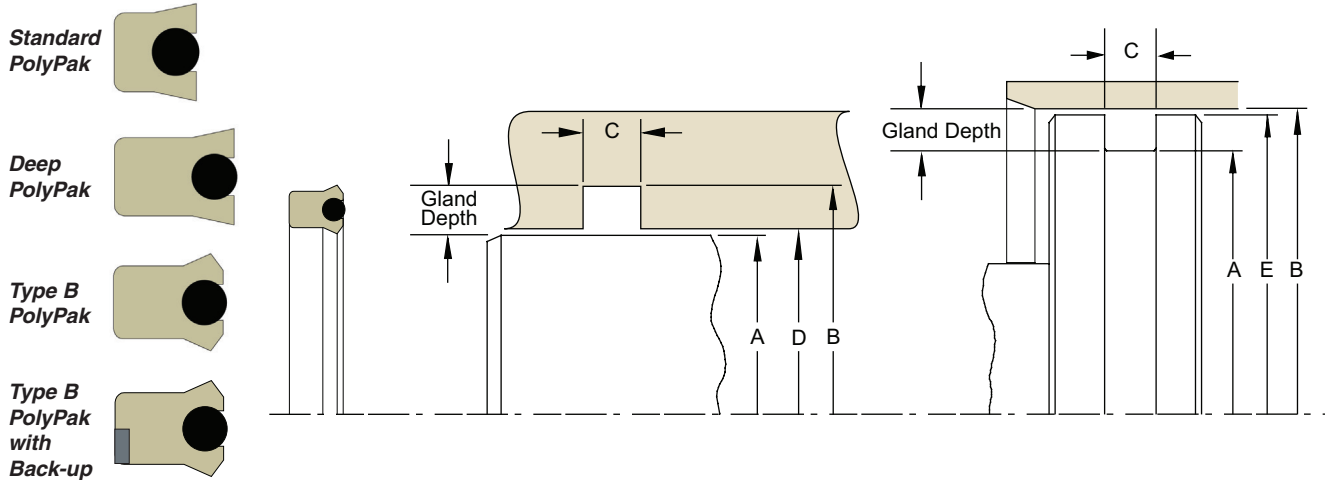


Table 7A. Rod Gland Dimension Tolerances

Nominal Gland Depth	A Rod Diameter	B Groove Diameter	C Groove Width	D Throat Diameter
1/8	+0.00/-0.001	+0.02/-0.000	+0.15/-0.000	+0.02/-0.000
3/16	+0.00/-0.002	+0.02/-0.000		+0.02/-0.000
1/4	+0.00/-0.002	+0.03/-0.000		+0.03/-0.000
5/16	+0.00/-0.002	+0.04/-0.000		+0.03/-0.000
3/8	+0.00/-0.002	+0.05/-0.000		+0.04/-0.000
7/16	+0.00/-0.003	+0.06/-0.000		+0.04/-0.000
1/2	+0.00/-0.003	+0.07/-0.000		+0.05/-0.000
5/8	+0.00/-0.003	+0.09/-0.000		+0.06/-0.000
3/4	+0.00/-0.004	+0.11/-0.000		+0.07/-0.000
1	+0.00/-0.005	+0.15/-0.000		+0.09/-0.000

Please refer to Engineering Section 2, page 2-8, (Catalog EPS5370) for surface finish and additional hardware considerations.

Table 7B. Piston Gland Dimension Tolerances

Nominal Gland Depth	B Bore Diameter	A Groove Diameter	C Groove Width	E Piston Diameter
1/8	+0.02/-0.000	+0.00/-0.002	+0.15/-0.000	+0.00/-0.001
3/16	+0.02/-0.000	+0.00/-0.002		+0.00/-0.002
1/4	+0.03/-0.000	+0.00/-0.003		+0.00/-0.002
5/16	+0.03/-0.000	+0.00/-0.004		+0.00/-0.002
3/8	+0.04/-0.000	+0.00/-0.005		+0.00/-0.002
7/16	+0.05/-0.000	+0.00/-0.006		+0.00/-0.002
1/2	+0.05/-0.000	+0.00/-0.007		+0.00/-0.003
9/16	+0.06/-0.000	+0.00/-0.008		+0.00/-0.003
5/8	+0.06/-0.000	+0.00/-0.009		+0.00/-0.003
3/4	+0.07/-0.000	+0.00/-0.010		+0.00/-0.004
7/8	+0.08/-0.000	+0.00/-0.011	+0.00/-0.005	
1	+0.09/-0.000	+0.00/-0.012	+0.00/-0.005	

Table 8. Standard, Deep and Type B PolyPak Gland Dimensions

A	B	C		D	E	Build Your Part Number				
Rod Diameter	(Rod) Groove Diameter	(Std. PP) Groove Width	(Deep & B) Groove Width	Throat Diameter*	Piston Diameter**	Material Code	Gland Depth & Seal Nominal ID (Refer to Profile Nomenclature)	Energizer Code (See Table 3)	Add to the part number for Type B or Deep only	Add to the part number for Type B only
(Bore) Groove Diameter	Bore Diameter									
0.062	0.312	0.138	0.275	0.063	0.311	XXXX	12500062	–	250	B
0.093	0.343	0.138	0.275	0.094	0.342	XXXX	12500093	–	250	B
0.125	0.375	0.138	0.275	0.126	0.374	XXXX	12500125	–	250	B
0.140	0.390	0.138	0.275	0.141	0.389	XXXX	12500140	–	250	B
0.187	0.437	0.138	0.275	0.188	0.436	XXXX	12500187	–	250	B
0.187	0.562	0.206	0.343	0.188	0.561	XXXX	18700187	–	312	B

*If used with wear rings, refer to wear ring throat diameter, see Section 9, Catalog EPS5370.

**If used with wear rings, refer to wear ring piston diameter, see Section 9, Catalog EPS5370.

For custom groove calculations, see Appendix C, Catalog EPS5370.

03/2015



Table 8. Standard, Deep and Type B PolyPak Gland Dimensions – Inch (Continued)

A Rod Diameter	B (Rod) Groove Diameter	C		D Throat Diameter*	E Piston Diameter**	Build Your Part Number				
		(Std. PP) Groove Width	(Deep & B) Groove Width			Material Code	Gland Depth & Seal Nominal ID (Refer to Profile Nomenclature)	Energizer Code (See Table 3)	Add to the part number for Type B or Deep only	Add to the part number for Type B only
0.187	0.750	0.309	0.550	0.188	0.749	XXXX	28100187	–	500	B
0.218	0.468	0.138	0.275	0.219	0.467	XXXX	12500218	–	250	B
0.250	0.500	0.138	0.275	0.251	0.499	XXXX	12500250	–	250	B
0.250	0.625	0.206	0.343	0.251	0.624	XXXX	18700250	–	312	B
0.250	0.750	0.275	0.413	0.251	0.749	XXXX	25000250	–	375	B
0.250	0.875	0.343	0.550	0.252	0.873	XXXX	31200250	–	500	B
0.312	0.562	0.138	0.275	0.313	0.561	XXXX	12500312	–	250	B
0.312	0.687	0.206	0.343	0.313	0.686	XXXX	18700312	–	312	B
0.312	0.750	0.240	0.413	0.313	0.749	XXXX	21800312	–	375	B
0.312	0.812	0.275	0.413	0.313	0.811	XXXX	25000312	–	375	B
0.359	0.609	0.138	0.275	0.360	0.608	XXXX	12500359	–	250	B
0.375	0.625	0.138	0.206	0.376	0.624	XXXX	12500375	–	187	B
0.375	0.625	0.138	0.275	0.376	0.624	XXXX	12500375	–	250	B
0.375	0.750	0.206	0.293	0.376	0.749	XXXX	18700375	–	266	B
0.375	0.750	0.206	0.343	0.376	0.749	XXXX	18700375	–	312	B
0.375	0.875	0.275	0.413	0.376	0.874	XXXX	25000375	–	375	B
0.375	1.000	0.343	0.550	0.377	0.998	XXXX	31200375	–	500	B
0.437	0.687	0.138	0.275	0.438	0.686	XXXX	12500437	–	250	B
0.437	0.750	0.172	0.275	0.438	0.749	XXXX	15600437	–	250	B
0.437	0.812	0.206	0.343	0.438	0.811	XXXX	18700437	–	312	B
0.437	0.875	0.240	0.413	0.438	0.874	XXXX	21800437	–	375	B
0.437	0.937	0.275	0.413	0.438	0.936	XXXX	25000437	–	375	B
0.437	1.062	0.343	0.550	0.439	1.060	XXXX	31200437	–	500	B
0.500	0.750	0.138	0.138	0.501	0.749	XXXX	12500500	–	125	B
0.500	0.750	0.138	0.275	0.501	0.749	XXXX	12500500	–	250	B
0.500	0.875	0.206	0.343	0.501	0.874	XXXX	18700500	–	312	B
0.500	1.000	0.275	0.413	0.501	0.999	XXXX	25000500	–	375	B
0.500	1.125	0.343	0.550	0.502	1.123	XXXX	31200500	–	500	B
0.500	1.250	0.413	0.688	0.502	1.248	XXXX	37500500	–	625	B
0.531	0.781	0.138	0.275	0.532	0.780	XXXX	12500531	–	250	B
0.562	0.812	0.138	0.138	0.563	0.811	XXXX	12500562	–	125	B
0.562	0.812	0.138	0.275	0.563	0.811	XXXX	12500562	–	250	B
0.562	0.936	0.206	0.343	0.563	0.935	XXXX	18700562	–	312	B
0.562	1.000	0.240	0.413	0.563	0.999	XXXX	21800562	–	375	B
0.562	1.062	0.275	0.413	0.563	1.061	XXXX	25000562	–	375	B
0.625	0.875	0.138	0.138	0.626	0.874	XXXX	12500625	–	125	B
0.625	0.875	0.138	0.206	0.626	0.874	XXXX	12500625	–	187	B
0.625	0.875	0.138	0.227	0.626	0.874	XXXX	12500625	–	206	B
0.625	0.875	0.138	0.275	0.626	0.874	XXXX	12500625	–	250	B
0.625	1.000	0.206	0.343	0.626	0.999	XXXX	18700625	–	312	B
0.625	1.125	0.275	0.413	0.626	1.124	XXXX	25000625	–	375	B
0.625	1.250	0.343	0.550	0.627	1.248	XXXX	31200625	–	500	B
0.625	1.375	0.413	0.688	0.627	1.373	XXXX	37500625	–	625	B
0.656	1.031	0.206	0.343	0.657	1.030	XXXX	18700656	–	312	B

*If used with wear rings, refer to wear ring throat diameter, see Section 9, Catalog EPS5370.

**If used with wear rings, refer to wear ring piston diameter, see Section 9, Catalog EPS5370.

For custom groove calculations, see Appendix C, Catalog EPS5370.

Standard, Deep and Type B PolyPak Profile

Table 8. Standard, Deep and Type B PolyPak Gland Dimensions – Inch (Continued)

A	B	C		D	E	Build Your Part Number				
		(Std. PP) Groove Width	(Deep & B) Groove Width			Throat Diameter*	Material Code	Gland Depth & Seal Nominal ID (Refer to Profile Nomenclature)	Energizer Code (See Table 3)	Add to the part number for Type B or Deep only
(Rod) Groove Diameter	(Bore) Groove Diameter	(Bore) Groove Diameter	(Rod) Groove Diameter	Piston Diameter**						
0.687	0.937	0.138	0.275	0.688	0.936	XXXX	12500687	–	250	B
0.687	1.061	0.206	0.206	0.688	1.060	XXXX	18700687	–	187	B
0.687	1.061	0.206	0.343	0.688	1.060	XXXX	18700687	–	312	B
0.687	1.187	0.275	0.413	0.688	1.186	XXXX	25000687	–	375	B
0.687	1.250	0.309	0.550	0.688	1.249	XXXX	28100687	–	500	B
0.687	1.312	0.343	0.550	0.689	1.310	XXXX	31200687	–	500	B
0.750	1.000	0.138	0.138	0.751	0.999	XXXX	12500750	–	125	B
0.750	1.000	0.138	0.206	0.751	0.999	XXXX	12500750	–	187	B
0.750	1.000	0.138	0.275	0.751	0.999	XXXX	12500750	–	250	B
0.750	1.062	0.172	0.275	0.751	1.061	XXXX	15600750	–	250	B
0.750	1.125	0.206	0.275	0.751	1.124	XXXX	18700750	–	250	B
0.750	1.125	0.206	0.343	0.751	1.124	XXXX	18700750	–	312	B
0.750	1.188	0.240	0.413	0.751	1.187	XXXX	21800750	–	375	B
0.750	1.250	0.275	0.413	0.751	1.249	XXXX	25000750	–	375	B
0.750	1.375	0.343	0.550	0.752	1.373	XXXX	31200750	–	500	B
0.750	1.500	0.413	0.688	0.752	1.498	XXXX	37500750	–	625	B
0.800	1.050	0.138	0.275	0.801	1.049	XXXX	12500800	–	250	B
0.812	1.062	0.138	0.138	0.813	1.061	XXXX	12500812	–	125	B
0.812	1.062	0.138	0.275	0.813	1.061	XXXX	12500812	–	250	B
0.812	1.186	0.206	0.343	0.813	1.185	XXXX	18700812	–	312	B
0.812	1.312	0.275	0.413	0.813	1.311	XXXX	25000812	–	375	B
0.812	1.436	0.343	0.550	0.814	1.434	XXXX	31200812	–	500	B
0.875	1.125	0.138	0.138	0.876	1.124	XXXX	12500875	–	125	B
0.875	1.125	0.138	0.206	0.876	1.124	XXXX	12500875	–	187	B
0.875	1.125	0.138	0.275	0.876	1.124	XXXX	12500875	–	250	B
0.875	1.250	0.206	0.275	0.876	1.249	XXXX	18700875	–	250	B
0.875	1.250	0.206	0.343	0.876	1.249	XXXX	18700875	–	312	B
0.875	1.250	0.206	0.413	0.876	1.249	XXXX	18700875	–	375	B
0.875	1.375	0.275	0.413	0.876	1.374	XXXX	25000875	–	375	B
0.875	1.500	0.343	0.550	0.877	1.498	XXXX	31200875	–	500	B
0.875	1.625	0.413	0.688	0.877	1.623	XXXX	37500875	–	625	B
0.906	1.156	0.138	0.275	0.907	1.155	XXXX	12500906	–	250	B
0.937	1.187	0.138	0.275	0.938	1.186	XXXX	12500937	–	250	B
0.937	1.250	0.172	0.275	0.938	1.249	XXXX	15600937	–	250	B
0.937	1.312	0.206	0.343	0.938	1.311	XXXX	18700937	–	312	B
0.937	1.375	0.240	0.413	0.938	1.374	XXXX	21800937	–	375	B
0.937	1.437	0.275	0.413	0.938	1.436	XXXX	25000937	–	375	B
0.937	1.687	0.413	0.688	0.939	1.685	XXXX	37500937	–	625	B
1.000	1.250	0.138	0.138	1.001	1.249	XXXX	12501000	–	125	B
1.000	1.250	0.138	0.172	1.001	1.249	XXXX	12501000	–	156	B
1.000	1.250	0.138	0.189	1.001	1.249	XXXX	12501000	–	172	B
1.000	1.250	0.138	0.206	1.001	1.249	XXXX	12501000	–	187	B
1.000	1.250	0.138	0.275	1.001	1.249	XXXX	12501000	–	250	B
1.000	1.312	0.172	0.172	1.001	1.311	XXXX	15601000	–	156	B

*If used with wear rings, refer to wear ring throat diameter, see Section 9, Catalog EPS5370.

**If used with wear rings, refer to wear ring piston diameter, see Section 9, Catalog EPS5370.

For custom groove calculations, see Appendix C, Catalog EPS5370.



Table 8. Standard, Deep and Type B PolyPak Gland Dimensions – Inch (Continued)

A Rod Diameter	B (Rod) Groove Diameter	C		D Throat Diameter*	E Piston Diameter**	Build Your Part Number				
		(Std. PP) Groove Width	(Deep & B) Groove Width			Material Code	Gland Depth & Seal Nominal ID (Refer to Profile Nomenclature)	Energizer Code (See Table 3)	Add to the part number for Type B or Deep only	Add to the part number for Type B only
1.000	1.312	0.172	0.257	1.001	1.311	XXXX	15601000	–	234	B
1.000	1.375	0.206	0.275	1.001	1.374	XXXX	18701000	–	250	B
1.000	1.375	0.206	0.343	1.001	1.374	XXXX	18701000	–	312	B
1.000	1.500	0.275	0.275	1.001	1.499	XXXX	25001000	–	250	B
1.000	1.500	0.275	0.413	1.001	1.499	XXXX	25001000	–	375	B
1.000	1.625	0.343	0.550	1.002	1.623	XXXX	31201000	–	500	B
1.000	1.750	0.413	0.688	1.002	1.748	XXXX	37501000	–	625	B
1.000	1.875	0.481	0.688	1.002	1.873	XXXX	43701000	–	625	B
1.000	2.000	0.550	0.825	1.002	1.998	XXXX	50001000	–	750	B
1.000	2.000	0.550	0.825	1.002	1.998	XXXX	50001000	–	750	B
1.062	1.312	0.138	0.187	1.063	1.311	XXXX	12501062	–	170	B
1.062	1.312	0.138	0.275	1.063	1.311	XXXX	12501062	–	250	B
1.062	1.375	0.172	0.275	1.063	1.374	XXXX	15601062	–	250	B
1.062	1.436	0.206	0.343	1.063	1.435	XXXX	18701062	–	312	B
1.062	1.562	0.275	0.413	1.063	1.561	XXXX	25001062	–	375	B
1.062	1.687	0.343	0.550	1.064	1.685	XXXX	31201062	–	500	B
1.093	1.593	0.275	0.413	1.094	1.592	XXXX	25001093	–	375	B
1.125	1.375	0.138	0.129	1.126	1.374	XXXX	12501125	–	117	B
1.125	1.375	0.138	0.195	1.126	1.374	XXXX	12501125	–	177	B
1.125	1.375	0.138	0.275	1.126	1.374	XXXX	12501125	–	250	B
1.125	1.500	0.206	0.206	1.126	1.499	XXXX	18701125	–	187	B
1.125	1.500	0.206	0.343	1.126	1.499	XXXX	18701125	–	312	B
1.125	1.625	0.275	0.413	1.126	1.624	XXXX	25001125	–	375	B
1.125	1.750	0.343	0.550	1.127	1.748	XXXX	31201125	–	500	B
1.125	1.875	0.413	0.688	1.127	1.873	XXXX	37501125	–	625	B
1.125	2.000	0.481	0.550	1.127	1.998	XXXX	43701125	–	500	B
1.125	2.000	0.481	0.688	1.127	1.998	XXXX	43701250	–	625	B
1.187	1.437	0.138	0.196	1.188	1.436	XXXX	12501187	–	178	B
1.187	1.437	0.138	0.206	1.188	1.436	XXXX	12501187	–	187	B
1.187	1.437	0.138	0.275	1.188	1.436	XXXX	12501187	–	250	B
1.187	1.500	0.172	0.275	1.188	1.499	XXXX	15601187	–	250	B
1.187	1.562	0.206	0.343	1.188	1.561	XXXX	18701187	–	312	B
1.187	1.687	0.275	0.413	1.188	1.686	XXXX	25001187	–	375	B
1.187	1.812	0.343	0.550	1.189	1.810	XXXX	31201187	–	500	B
1.187	2.000	0.447	0.688	1.189	1.998	XXXX	40601187	–	625	B
1.250	1.500	0.138	0.206	1.251	1.499	XXXX	12501250	–	187	B
1.250	1.500	0.138	0.275	1.251	1.499	XXXX	12501250	–	250	B
1.250	1.563	0.172	0.275	1.251	1.562	XXXX	15601250	–	250	B
1.250	1.625	0.206	0.275	1.251	1.624	XXXX	18701250	–	250	B
1.250	1.625	0.206	0.343	1.251	1.624	XXXX	18701250	–	312	B
1.250	1.625	0.206	0.413	1.251	1.624	XXXX	18701250	–	375	B
1.250	1.750	0.275	0.275	1.251	1.749	XXXX	25001250	–	250	B
1.250	1.750	0.275	0.413	1.251	1.749	XXXX	25001250	–	375	B
1.250	1.875	0.343	0.550	1.252	1.873	XXXX	31201250	–	500	B

*If used with wear rings, refer to wear ring throat diameter, see Section 9, Catalog EPS5370.

**If used with wear rings, refer to wear ring piston diameter, see Section 9, Catalog EPS5370.

For custom groove calculations, see Appendix C, Catalog EPS5370.

Standard, Deep and Type B PolyPak Profile

Table 8. Standard, Deep and Type B PolyPak Gland Dimensions – Inch (Continued)

A Rod Diameter	B (Rod) Groove Diameter	C		D Throat Diameter*	E Piston Diameter**	Build Your Part Number				
		(Std. PP) Groove Width	(Deep & B) Groove Width			Material Code	Gland Depth & Seal Nominal ID (Refer to Profile Nomenclature)	Energizer Code (See Table 3)	Add to the part number for Type B or Deep only	Add to the part number for Type B only
1.250	2.000	0.413	0.688	1.252	1.998	XXXX	37501250	–	625	B
1.250	2.063	0.447	0.688	1.252	2.061	XXXX	40601250	–	625	B
1.250	2.250	0.550	0.825	1.252	2.248	XXXX	50001250	–	750	B
1.250	2.500	0.688	0.963	1.253	2.497	XXXX	62501750	–	875	B
1.312	1.562	0.138	0.206	1.313	1.561	XXXX	12501312	–	187	B
1.312	1.625	0.172	0.275	1.313	1.624	XXXX	15601312	–	250	B
1.312	1.686	0.206	0.206	1.313	1.685	XXXX	18701312	–	187	B
1.312	1.686	0.206	0.343	1.313	1.685	XXXX	18701312	–	312	B
1.312	1.812	0.275	0.413	1.313	1.811	XXXX	25001312	–	375	B
1.312	1.937	0.343	0.550	1.314	1.935	XXXX	31201312	–	500	B
1.312	2.000	0.377	0.688	1.314	1.998	XXXX	34301312	–	625	B
1.312	2.062	0.413	0.481	1.314	2.060	XXXX	37501312	–	437	B
1.312	2.312	0.550	0.825	1.314	2.310	XXXX	50001312	–	750	B
1.375	1.625	0.138	0.138	1.376	1.624	XXXX	12501375	–	125	B
1.375	1.625	0.138	0.196	1.376	1.624	XXXX	12501375	–	178	B
1.375	1.625	0.138	0.275	1.376	1.624	XXXX	12501375	–	250	B
1.375	1.687	0.172	0.172	1.376	1.686	XXXX	15601375	–	156	B
1.375	1.750	0.206	0.343	1.376	1.749	XXXX	18701375	–	312	B
1.375	1.750	0.206	0.413	1.376	1.749	XXXX	18701375	–	375	B
1.375	1.875	0.275	0.413	1.376	1.874	XXXX	25001375	–	375	B
1.375	2.000	0.343	0.550	1.377	1.998	XXXX	31201375	–	500	B
1.375	2.125	0.413	0.688	1.377	2.123	XXXX	37501375	–	625	B
1.375	2.250	0.481	0.688	1.377	2.248	XXXX	43701375	–	625	B
1.375	2.375	0.550	0.825	1.377	2.373	XXXX	50001375	–	750	B
1.437	1.687	0.138	0.275	1.438	1.686	XXXX	12501437	–	250	B
1.437	1.812	0.206	0.343	1.438	1.811	XXXX	18701437	–	312	B
1.437	1.937	0.275	0.413	1.438	1.936	XXXX	25001437	–	375	B
1.437	2.061	0.343	0.550	1.439	2.059	XXXX	31201437	–	500	B
1.437	2.187	0.413	0.688	1.439	2.185	XXXX	37501437	–	625	B
1.437	2.312	0.481	0.688	1.439	2.310	XXXX	43701437	–	625	B
1.500	1.750	0.138	0.138	1.501	1.749	XXXX	12501500	–	125	B
1.500	1.750	0.138	0.206	1.501	1.749	XXXX	12501500	–	187	B
1.500	1.750	0.138	0.275	1.501	1.749	XXXX	12501500	–	250	B
1.500	1.750	0.138	0.343	1.501	1.749	XXXX	12501500	–	312	B
1.500	1.812	0.172	0.343	1.501	1.811	XXXX	15601500	–	312	B
1.500	1.875	0.206	0.206	1.501	1.874	XXXX	18701500	–	187	B
1.500	1.875	0.206	0.275	1.501	1.874	XXXX	18701500	–	250	B
1.500	1.875	0.206	0.309	1.501	1.874	XXXX	18701500	–	281	B
1.500	1.875	0.206	0.343	1.501	1.874	XXXX	18701500	–	312	B
1.500	1.875	0.206	0.413	1.501	1.874	XXXX	18701500	–	375	B
1.500	2.000	0.275	0.275	1.501	1.999	XXXX	25001500	–	250	B
1.500	2.000	0.275	0.413	1.501	1.999	XXXX	25001500	–	375	B
1.500	2.125	0.343	0.550	1.502	2.123	XXXX	31201500	–	500	B
1.500	2.250	0.413	0.688	1.502	2.248	XXXX	37501500	–	625	B

*If used with wear rings, refer to wear ring throat diameter, see Section 9, Catalog EPS5370.

**If used with wear rings, refer to wear ring piston diameter, see Section 9, Catalog EPS5370.

For custom groove calculations, see Appendix C, Catalog EPS5370.



Table 8. Standard, Deep and Type B PolyPak Gland Dimensions – Inch (Continued)

A Rod Diameter	B (Rod) Groove Diameter	C		D Throat Diameter*	E Piston Diameter**	Build Your Part Number				
		(Std. PP) Groove Width	(Deep & B) Groove Width			Material Code	Gland Depth & Seal Nominal ID (Refer to Profile Nomenclature)	Energizer Code (See Table 3)	Add to the part number for Type B or Deep only	Add to the part number for Type B only
1.500	2.375	0.481	0.688	1.502	2.373	XXXX	43701500	–	625	B
1.500	2.500	0.550	0.825	1.502	2.498	XXXX	50001500	–	750	B
1.562	1.812	0.138	0.275	1.563	1.811	XXXX	12501562	–	250	B
1.562	1.937	0.206	0.275	1.563	1.936	XXXX	18701562	–	250	B
1.562	2.312	0.413	0.688	1.564	2.310	XXXX	37501562	–	625	B
1.625	1.875	0.138	0.275	1.626	1.874	XXXX	12501625	–	250	B
1.625	1.875	0.138	0.275	1.626	1.874	XXXX	12501625	–	250	B
1.625	2.000	0.206	0.206	1.626	1.999	XXXX	18701625	–	187	B
1.625	2.000	0.206	0.275	1.626	1.999	XXXX	18701625	–	250	B
1.625	2.000	0.206	0.293	1.626	1.999	XXXX	18701625	–	266	B
1.625	2.000	0.206	0.343	1.626	1.999	XXXX	18701625	–	312	B
1.625	2.000	0.206	0.413	1.626	1.999	XXXX	18701625	–	375	B
1.625	2.125	0.275	0.413	1.626	2.124	XXXX	25001625	–	375	B
1.625	2.250	0.343	0.550	1.627	2.248	XXXX	31201625	–	500	B
1.625	2.375	0.413	0.413	1.627	2.373	XXXX	37501625	–	375	B
1.625	2.375	0.413	0.688	1.627	2.373	XXXX	37501625	–	625	B
1.687	1.937	0.138	0.275	1.688	1.936	XXXX	12501687	–	250	B
1.687	2.062	0.206	0.413	1.688	2.061	XXXX	18701687	–	375	B
1.687	2.312	0.343	0.550	1.689	2.310	XXXX	31201687	–	500	B
1.750	2.000	0.138	0.138	1.751	1.999	XXXX	12501750	–	125	B
1.750	2.000	0.138	0.275	1.751	1.999	XXXX	12501750	–	250	B
1.750	2.125	0.206	0.206	1.751	2.124	XXXX	18701750	–	187	B
1.750	2.125	0.206	0.253	1.751	2.124	XXXX	18701750	–	230	B
1.750	2.125	0.206	0.275	1.751	2.124	XXXX	18701750	–	250	B
1.750	2.125	0.206	0.293	1.751	2.124	XXXX	18701750	–	266	B
1.750	2.125	0.206	0.343	1.751	2.124	XXXX	18701750	–	312	B
1.750	2.125	0.206	0.413	1.751	2.124	XXXX	18701750	–	375	B
1.750	2.188	0.240	0.413	1.751	2.187	XXXX	21801750	–	375	B
1.750	2.250	0.275	0.275	1.751	2.249	XXXX	25001750	–	250	B
1.750	2.250	0.275	0.413	1.751	2.249	XXXX	25001750	–	375	B
1.750	2.375	0.343	0.550	1.752	2.373	XXXX	31201750	–	500	B
1.750	2.500	0.413	0.688	1.752	2.498	XXXX	37501750	–	625	B
1.750	2.563	0.447	0.688	1.752	2.561	XXXX	40601750	–	625	B
1.750	2.625	0.481	0.688	1.752	2.623	XXXX	43701750	–	625	B
1.750	2.750	0.550	0.825	1.752	2.748	XXXX	50001750	–	750	B
1.750	3.000	0.688	0.963	1.753	2.997	XXXX	62501812	–	875	B
1.812	2.187	0.206	0.343	1.813	2.186	XXXX	18701812	–	312	B
1.812	2.500	0.377	0.688	1.814	2.498	XXXX	34301812	–	625	B
1.875	2.125	0.138	0.138	1.876	2.124	XXXX	12501875	–	125	B
1.875	2.125	0.138	0.275	1.876	2.124	XXXX	12501875	–	250	B
1.875	2.250	0.206	0.275	1.876	2.249	XXXX	18701875	–	250	B
1.875	2.250	0.206	0.308	1.876	2.249	XXXX	18701875	–	280	B
1.875	2.250	0.206	0.413	1.876	2.249	XXXX	18701875	–	375	B
1.875	2.375	0.275	0.413	1.876	2.374	XXXX	25001875	–	375	B

*If used with wear rings, refer to wear ring throat diameter, see Section 9, Catalog EPS5370.

**If used with wear rings, refer to wear ring piston diameter, see Section 9, Catalog EPS5370.

For custom groove calculations, see Appendix C, Catalog EPS5370.

Standard, Deep and Type B PolyPak Profile

Table 8. Standard, Deep and Type B PolyPak Gland Dimensions – Inch (Continued)

A Rod Diameter	B (Rod) Groove Diameter	C		D Throat Diameter*	E Piston Diameter**	Build Your Part Number				
		(Std. PP) Groove Width	(Deep & B) Groove Width			Material Code	Gland Depth & Seal Nominal ID (Refer to Profile Nomenclature)	Energizer Code (See Table 3)	Add to the part number for Type B or Deep only	Add to the part number for Type B only
1.875	2.500	0.343	0.550	1.877	2.498	XXXX	31201875	–	500	B
1.875	2.625	0.413	0.688	1.877	2.623	XXXX	37501875	–	625	B
1.875	2.750	0.481	0.688	1.877	2.748	XXXX	43701875	–	625	B
1.875	2.875	0.550	0.825	1.877	2.873	XXXX	50001875	–	750	B
1.875	3.000	0.618	0.963	1.877	2.998	XXXX	56201875	–	875	B
1.875	3.125	0.688	1.100	1.878	3.122	XXXX	62501875	–	1000	B
1.937	2.312	0.206	0.309	1.938	2.311	XXXX	18701937	–	281	B
1.937	2.312	0.206	0.413	1.938	2.311	XXXX	18701937	–	375	B
1.937	2.437	0.275	0.413	1.938	2.436	XXXX	25001937	–	375	B
1.937	2.562	0.343	0.550	1.939	2.560	XXXX	31201937	–	500	B
2.000	2.250	0.138	0.206	2.001	2.249	XXXX	12502000	–	187	B
2.000	2.250	0.138	0.275	2.001	2.249	XXXX	12502000	–	250	B
2.000	2.375	0.206	0.206	2.001	2.374	XXXX	18702000	–	187	B
2.000	2.375	0.206	0.253	2.001	2.374	XXXX	18702000	–	230	B
2.000	2.375	0.206	0.289	2.001	2.374	XXXX	18702000	–	263	B
2.000	2.375	0.206	0.343	2.001	2.374	XXXX	18702000	–	312	B
2.000	2.375	0.206	0.413	2.001	2.374	XXXX	18702000	–	375	B
2.000	2.438	0.240	0.413	2.001	2.437	XXXX	21802000	–	375	B
2.000	2.500	0.275	0.275	2.001	2.499	XXXX	25002000	–	250	B
2.000	2.500	0.275	0.413	2.001	2.499	XXXX	25002000	–	375	B
2.000	2.625	0.343	0.550	2.002	2.623	XXXX	31202000	–	500	B
2.000	2.750	0.413	0.550	2.002	2.748	XXXX	37502000	–	500	B
2.000	2.750	0.413	0.688	2.002	2.748	XXXX	37502000	–	625	B
2.000	2.875	0.481	0.688	2.002	2.873	XXXX	43702000	–	625	B
2.000	3.000	0.550	0.825	2.002	2.998	XXXX	50002000	–	750	B
2.000	3.250	0.688	1.100	2.003	3.247	XXXX	62502000	–	1000	B
2.062	2.375	0.172	0.275	2.063	2.374	XXXX	15602062	–	250	B
2.062	2.437	0.206	0.413	2.063	2.436	XXXX	18702062	–	375	B
2.062	2.500	0.240	0.413	2.063	2.499	XXXX	21802062	–	375	B
2.062	2.812	0.413	0.688	2.064	2.810	XXXX	37502062	–	625	B
2.125	2.375	0.138	0.275	2.126	2.374	XXXX	12502125	–	250	B
2.125	2.500	0.206	0.206	2.126	2.499	XXXX	18702125	–	187	B
2.125	2.500	0.206	0.275	2.126	2.499	XXXX	18702125	–	250	B
2.125	2.500	0.206	0.413	2.126	2.499	XXXX	18702125	–	375	B
2.125	2.625	0.275	0.275	2.126	2.624	XXXX	25002125	–	250	B
2.125	2.625	0.275	0.413	2.126	2.624	XXXX	25002125	–	375	B
2.125	2.750	0.343	0.550	2.127	2.748	XXXX	31202125	–	500	B
2.125	2.875	0.413	0.688	2.127	2.873	XXXX	37502125	–	625	B
2.125	3.000	0.481	0.688	2.127	2.998	XXXX	43702125	–	625	B
2.125	3.125	0.550	0.825	2.127	3.123	XXXX	50002125	–	750	B
2.187	2.562	0.206	0.413	2.188	2.561	XXXX	18702187	–	375	B
2.250	2.500	0.138	0.206	2.251	2.499	XXXX	12502250	–	187	B
2.250	2.625	0.206	0.343	2.251	2.624	XXXX	18702250	–	312	B
2.250	2.625	0.206	0.413	2.251	2.624	XXXX	18702250	–	375	B

*If used with wear rings, refer to wear ring throat diameter, see Section 9, Catalog EPS5370.

**If used with wear rings, refer to wear ring piston diameter, see Section 9, Catalog EPS5370.

For custom groove calculations, see Appendix C, Catalog EPS5370.



Table 8. Standard, Deep and Type B PolyPak Gland Dimensions – Inch (Continued)

A Rod Diameter	B (Rod) Groove Diameter	C		D Throat Diameter*	E Piston Diameter**	Build Your Part Number				
		(Std. PP) Groove Width	(Deep & B) Groove Width			Material Code	Gland Depth & Seal Nominal ID (Refer to Profile Nomenclature)	Energizer Code (See Table 3)	Add to the part number for Type B or Deep only	Add to the part number for Type B only
2.250	2.750	0.275	0.413	2.251	2.749	XXXX	25002250	–	375	B
2.250	2.812	0.309	0.413	2.251	2.811	XXXX	28102250	–	375	B
2.250	2.875	0.343	0.550	2.252	2.873	XXXX	31202250	–	500	B
2.250	3.000	0.413	0.688	2.252	2.998	XXXX	37502250	–	625	B
2.250	3.125	0.481	0.413	2.252	3.123	XXXX	43702250	–	375	B
2.250	3.125	0.481	0.688	2.252	3.123	XXXX	43702250	–	625	B
2.250	3.250	0.550	0.825	2.252	3.248	XXXX	50002250	–	750	B
2.312	2.875	0.309	0.550	2.313	2.874	XXXX	28102312	–	500	B
2.312	2.937	0.343	0.550	2.314	2.935	XXXX	31202312	–	500	B
2.312	3.000	0.377	0.688	2.314	2.998	XXXX	34302312	–	625	B
2.375	2.625	0.138	0.275	2.376	2.624	XXXX	12502375	–	250	B
2.375	2.750	0.206	0.275	2.376	2.749	XXXX	18702375	–	250	B
2.375	2.750	0.206	0.293	2.376	2.749	XXXX	18702375	–	266	B
2.375	2.750	0.206	0.343	2.376	2.749	XXXX	18702375	–	312	B
2.375	2.750	0.206	0.413	2.376	2.749	XXXX	18702375	–	375	B
2.375	2.875	0.275	0.275	2.376	2.874	XXXX	25002375	–	250	B
2.375	2.875	0.275	0.413	2.376	2.874	XXXX	25002375	–	375	B
2.375	3.000	0.343	0.550	2.377	2.998	XXXX	31202375	–	500	B
2.375	3.125	0.413	0.688	2.377	3.123	XXXX	37502375	–	625	B
2.375	3.375	0.550	0.825	2.377	3.373	XXXX	50002375	–	750	B
2.437	3.187	0.413	0.688	2.439	3.185	XXXX	37502437	–	625	B
2.500	2.750	0.138	0.275	2.501	2.749	XXXX	12502500	–	250	B
2.500	2.875	0.206	0.275	2.501	2.874	XXXX	18702500	–	250	B
2.500	2.875	0.206	0.413	2.501	2.874	XXXX	18702500	–	375	B
2.500	2.937	0.240	0.240	2.501	2.936	XXXX	21802500	–	218	B
2.500	2.937	0.240	0.320	2.501	2.936	XXXX	21802500	–	291	B
2.500	2.937	0.240	0.413	2.501	2.936	XXXX	21802500	–	375	B
2.500	3.000	0.275	0.275	2.501	2.999	XXXX	25002500	–	250	B
2.500	3.000	0.275	0.413	2.501	2.999	XXXX	25002500	–	375	B
2.500	3.125	0.343	0.550	2.502	3.123	XXXX	31202500	–	500	B
2.500	3.188	0.377	0.688	2.502	3.186	XXXX	34302500	–	625	B
2.500	3.250	0.413	0.688	2.502	3.248	XXXX	37502500	–	625	B
2.500	3.375	0.481	0.688	2.502	3.373	XXXX	43702500	–	625	B
2.500	3.500	0.550	0.825	2.502	3.498	XXXX	50002500	–	750	B
2.500	3.750	0.688	1.100	2.503	3.747	XXXX	62502500	–	1000	B
2.562	3.000	0.240	0.413	2.563	2.999	XXXX	21802562	–	375	B
2.562	3.062	0.275	0.413	2.563	3.061	XXXX	25002562	–	375	B
2.562	3.125	0.309	0.550	2.563	3.124	XXXX	28102562	–	500	B
2.562	3.187	0.343	0.550	2.564	3.185	XXXX	31202562	–	500	B
2.625	2.875	0.138	0.275	2.626	2.874	XXXX	12502625	–	250	B
2.625	3.000	0.206	0.309	2.626	2.999	XXXX	18702625	–	281	B
2.625	3.000	0.206	0.275	2.626	2.999	XXXX	18702625	–	250	B
2.625	3.000	0.206	0.343	2.626	2.999	XXXX	18702625	–	312	B
2.625	3.000	0.206	0.413	2.626	2.999	XXXX	18702625	–	375	B

*If used with wear rings, refer to wear ring throat diameter, see Section 9, Catalog EPS5370.

**If used with wear rings, refer to wear ring piston diameter, see Section 9, Catalog EPS5370.

For custom groove calculations, see Appendix C, Catalog EPS5370.

Standard, Deep and Type B PolyPak Profile

Table 8. Standard, Deep and Type B PolyPak Gland Dimensions – Inch (Continued)

A Rod Diameter	B (Rod) Groove Diameter	C		D Throat Diameter*	E Piston Diameter**	Build Your Part Number				
		(Std. PP) Groove Width	(Deep & B) Groove Width			Material Code	Gland Depth & Seal Nominal ID (Refer to Profile Nomenclature)	Energizer Code (See Table 3)	Add to the part number for Type B or Deep only	Add to the part number for Type B only
2.625	3.125	0.275	0.413	2.626	3.124	XXXX	25002625	–	375	B
2.625	3.250	0.343	0.550	2.627	3.248	XXXX	31202625	–	500	B
2.625	3.375	0.413	0.688	2.627	3.373	XXXX	37502625	–	625	B
2.687	3.375	0.377	0.688	2.689	3.373	XXXX	34302687	–	625	B
2.687	3.437	0.413	0.688	2.689	3.435	XXXX	37502687	–	625	B
2.750	3.000	0.138	0.275	2.751	2.999	XXXX	12502750	–	250	B
2.750	3.125	0.206	0.206	2.751	3.124	XXXX	18702750	–	187	B
2.750	3.125	0.206	0.309	2.751	3.124	XXXX	18702750	–	281	B
2.750	3.125	0.206	0.413	2.751	3.124	XXXX	18702750	–	375	B
2.750	3.250	0.275	0.413	2.751	3.249	XXXX	25002750	–	375	B
2.750	3.375	0.343	0.550	2.752	3.373	XXXX	31202750	–	500	B
2.750	3.500	0.413	0.688	2.752	3.498	XXXX	37502750	–	625	B
2.750	3.750	0.550	0.825	2.752	3.748	XXXX	50002750	–	750	B
2.750	4.000	0.688	1.100	2.753	3.997	XXXX	62502750	–	1000	B
2.812	3.250	0.240	0.413	2.813	3.249	XXXX	21802812	–	375	B
2.812	4.062	0.688	1.100	2.815	4.059	XXXX	62502812	–	1000	B
2.875	3.125	0.138	0.275	2.876	3.124	XXXX	12502875	–	250	B
2.875	3.250	0.206	0.206	2.876	3.249	XXXX	18702875	–	187	B
2.875	3.250	0.206	0.275	2.876	3.249	XXXX	18702875	–	250	B
2.875	3.250	0.206	0.309	2.876	3.249	XXXX	18702875	–	281	B
2.875	3.250	0.206	0.413	2.876	3.249	XXXX	18702875	–	375	B
2.875	3.375	0.275	0.413	2.876	3.374	XXXX	25002875	–	375	B
2.875	3.500	0.343	0.550	2.877	3.498	XXXX	31202875	–	500	B
2.875	3.625	0.413	0.688	2.877	3.623	XXXX	37502875	–	625	B
2.875	3.750	0.481	0.688	2.877	3.748	XXXX	43702875	–	625	B
2.875	3.875	0.550	0.825	2.877	3.873	XXXX	50002875	–	750	B
2.875	4.000	0.618	0.963	2.877	3.998	XXXX	56202875	–	875	B
2.875	4.125	0.688	1.100	2.878	4.122	XXXX	62502875	–	1000	B
3.000	3.250	0.138	0.275	3.001	3.249	XXXX	12503000	–	250	B
3.000	3.375	0.206	0.275	3.001	3.374	XXXX	18703000	–	250	B
3.000	3.375	0.206	0.413	3.001	3.374	XXXX	18703000	–	375	B
3.000	3.437	0.240	0.240	3.001	3.436	XXXX	21803000	–	218	B
3.000	3.437	0.240	0.320	3.001	3.436	XXXX	21803000	–	291	B
3.000	3.437	0.240	0.343	3.001	3.436	XXXX	21803000	–	312	B
3.000	3.500	0.275	0.275	3.001	3.499	XXXX	25003000	–	250	B
3.000	3.500	0.275	0.413	3.001	3.499	XXXX	25003000	–	375	B
3.000	3.625	0.343	0.550	3.002	3.623	XXXX	31203000	–	500	B
3.000	3.750	0.413	0.550	3.002	3.748	XXXX	37503000	–	500	B
3.000	3.750	0.413	0.688	3.002	3.748	XXXX	37503000	–	625	B
3.000	3.875	0.481	0.756	3.002	3.873	XXXX	43703000	–	687	B
3.000	4.000	0.550	0.825	3.002	3.998	XXXX	50003000	–	750	B
3.000	4.250	0.688	1.100	3.003	4.247	XXXX	62503000	–	1000	B
3.062	3.500	0.240	0.413	3.063	3.499	XXXX	21803062	–	375	B
3.125	3.500	0.206	0.206	3.126	3.499	XXXX	18703125	–	187	B

*If used with wear rings, refer to wear ring throat diameter, see Section 9, Catalog EPS5370.

**If used with wear rings, refer to wear ring piston diameter, see Section 9, Catalog EPS5370.

For custom groove calculations, see Appendix C, Catalog EPS5370.

Table 8. Standard, Deep and Type B PolyPak Gland Dimensions – Inch (Continued)

A Rod Diameter	B (Rod) Groove Diameter	C		D Throat Diameter*	E Piston Diameter**	Build Your Part Number				
		(Std. PP) Groove Width	(Deep & B) Groove Width			Material Code	Gland Depth & Seal Nominal ID (Refer to Profile Nomenclature)	Energizer Code (See Table 3)	Add to the part number for Type B or Deep only	Add to the part number for Type B only
3.125	3.500	0.206	0.343	3.126	3.499	XXXX	18703125	–	312	B
3.125	3.500	0.206	0.413	3.126	3.499	XXXX	18703125	–	375	B
3.125	3.625	0.275	0.413	3.126	3.624	XXXX	25003125	–	375	B
3.125	3.750	0.343	0.413	3.127	3.748	XXXX	31203125	–	375	B
3.125	3.750	0.343	0.550	3.127	3.748	XXXX	31203125	–	500	B
3.125	3.875	0.413	0.688	3.127	3.873	XXXX	37503125	–	625	B
3.125	4.000	0.481	0.688	3.127	3.998	XXXX	43703125	–	625	B
3.250	3.500	0.138	0.275	3.251	3.499	XXXX	12503250	–	250	B
3.250	3.625	0.206	0.275	3.251	3.624	XXXX	18703250	–	250	B
3.250	3.625	0.206	0.413	3.251	3.624	XXXX	18703250	–	375	B
3.250	3.750	0.275	0.275	3.251	3.749	XXXX	25003250	–	250	B
3.250	3.750	0.275	0.413	3.251	3.749	XXXX	25003250	–	375	B
3.250	3.875	0.343	0.550	3.252	3.873	XXXX	31203250	–	500	B
3.250	4.000	0.413	0.550	3.252	3.998	XXXX	37503250	–	500	B
3.250	4.000	0.413	0.688	3.252	3.998	XXXX	37503250	–	625	B
3.250	4.125	0.481	0.688	3.252	4.123	XXXX	43703250	–	625	B
3.250	4.250	0.550	0.825	3.252	4.248	XXXX	50003250	–	750	B
3.250	4.500	0.688	1.100	3.253	4.497	XXXX	62503250	–	1000	B
3.375	3.750	0.206	0.206	3.376	3.749	XXXX	18703375	–	187	B
3.375	3.750	0.206	0.275	3.376	3.749	XXXX	18703375	–	250	B
3.375	3.750	0.206	0.413	3.376	3.749	XXXX	18703375	–	375	B
3.375	3.875	0.275	0.413	3.376	3.874	XXXX	25003375	–	375	B
3.375	4.000	0.343	0.343	3.377	3.998	XXXX	31203375	–	312	B
3.375	4.000	0.343	0.550	3.377	3.998	XXXX	31203375	–	500	B
3.375	4.125	0.413	0.688	3.377	4.123	XXXX	37503375	–	625	B
3.375	4.375	0.550	0.688	3.377	4.373	XXXX	50003375	–	625	B
3.375	4.625	0.688	1.100	3.378	4.622	XXXX	62503375	–	1000	B
3.437	3.875	0.240	0.413	3.438	3.874	XXXX	21803437	–	375	B
3.500	3.750	0.138	0.275	3.501	3.749	XXXX	12503500	–	250	B
3.500	3.875	0.206	0.293	3.501	3.874	XXXX	18703500	–	266	B
3.500	3.875	0.206	0.309	3.501	3.874	XXXX	18703500	–	281	B
3.500	3.875	0.206	0.413	3.501	3.874	XXXX	18703500	–	375	B
3.500	4.000	0.275	0.275	3.501	3.999	XXXX	25003500	–	250	B
3.500	4.000	0.275	0.362	3.501	3.999	XXXX	25003500	–	329	B
3.500	4.000	0.275	0.413	3.501	3.999	XXXX	25003500	–	375	B
3.500	4.125	0.343	0.550	3.502	4.123	XXXX	31203500	–	500	B
3.500	4.250	0.413	0.688	3.502	4.248	XXXX	37503500	–	625	B
3.500	4.500	0.550	0.825	3.502	4.498	XXXX	50003500	–	750	B
3.500	4.750	0.688	1.100	3.503	4.747	XXXX	62503500	–	1000	B
3.500	5.000	0.825	1.375	3.503	4.997	XXXX	75003500	–	1250	B
3.625	3.875	0.138	0.206	3.626	3.874	XXXX	12503625	–	187	B
3.625	4.000	0.206	0.413	3.626	3.999	XXXX	18703625	–	375	B
3.625	4.125	0.275	0.413	3.626	4.124	XXXX	25003625	–	375	B
3.625	4.250	0.343	0.550	3.627	4.248	XXXX	31203625	–	500	B

*If used with wear rings, refer to wear ring throat diameter, see Section 9, Catalog EPS5370.

**If used with wear rings, refer to wear ring piston diameter, see Section 9, Catalog EPS5370.

For custom groove calculations, see Appendix C, Catalog EPS5370.

Standard, Deep and Type B PolyPak Profile

Table 8. Standard, Deep and Type B PolyPak Gland Dimensions – Inch (Continued)

A	B	C		D	E	Build Your Part Number				
		(Std. PP) Groove Width	(Deep & B) Groove Width			Throat Diameter*	Material Code	Gland Depth & Seal Nominal ID (Refer to Profile Nomenclature)	Energizer Code (See Table 3)	Add to the part number for Type B or Deep only
(Rod) Groove Diameter	(Bore) Groove Diameter	(Bore) Groove Diameter	(Rod) Groove Diameter	Piston Diameter**						
3.625	4.375	0.413	0.688	3.627	4.373	XXXX	37503625	–	625	B
3.625	4.500	0.481	0.688	3.627	4.498	XXXX	43703625	–	625	B
3.625	4.625	0.550	0.825	3.627	4.623	XXXX	50003625	–	750	B
3.687	4.250	0.309	0.413	3.688	4.249	XXXX	28103687	–	375	B
3.750	4.125	0.206	0.275	3.751	4.124	XXXX	18703750	–	250	B
3.750	4.125	0.206	0.413	3.751	4.124	XXXX	18703750	–	375	B
3.750	4.250	0.275	0.413	3.751	4.249	XXXX	25003750	–	375	B
3.750	4.250	0.275	0.618	3.751	4.249	XXXX	25003750	–	562	B
3.750	4.375	0.343	0.413	3.752	4.373	XXXX	31203750	–	375	B
3.750	4.375	0.343	0.550	3.752	4.373	XXXX	31203750	–	500	B
3.750	4.375	0.343	0.688	3.752	4.373	XXXX	31203750	–	625	B
3.750	4.500	0.413	0.550	3.752	4.498	XXXX	37503750	–	500	B
3.750	4.500	0.413	0.688	3.752	4.498	XXXX	37503750	–	625	B
3.750	4.750	0.550	0.759	3.752	4.748	XXXX	50003750	–	690	B
3.750	5.000	0.688	1.100	3.753	4.997	XXXX	62503750	–	1000	B
3.875	4.250	0.206	0.413	3.876	4.249	XXXX	18703875	–	375	B
3.875	4.375	0.275	0.413	3.876	4.374	XXXX	25003875	–	375	B
3.875	4.500	0.343	0.550	3.877	4.498	XXXX	31203875	–	500	B
3.875	4.625	0.413	0.688	3.877	4.623	XXXX	37503875	–	625	B
3.875	4.750	0.481	0.825	3.877	4.748	XXXX	43703875	–	750	B
3.875	4.875	0.550	0.825	3.877	4.873	XXXX	50003875	–	750	B
3.937	4.500	0.309	0.550	3.938	4.499	XXXX	28103937	–	500	B
4.000	4.250	0.138	0.275	4.001	4.249	XXXX	12504000	–	250	B
4.000	4.375	0.206	0.206	4.001	4.374	XXXX	18704000	–	187	B
4.000	4.375	0.206	0.413	4.001	4.374	XXXX	18704000	–	375	B
4.000	4.500	0.275	0.275	4.001	4.499	XXXX	25004000	–	250	B
4.000	4.500	0.275	0.413	4.001	4.499	XXXX	25004000	–	375	B
4.000	4.500	0.275	0.618	4.001	4.499	XXXX	25004000	–	562	B
4.000	4.625	0.343	0.550	4.002	4.623	XXXX	31204000	–	500	B
4.000	4.625	0.343	0.618	4.002	4.623	XXXX	31204000	–	562	B
4.000	4.750	0.413	0.550	4.002	4.748	XXXX	37504000	–	500	B
4.000	4.750	0.413	0.688	4.002	4.748	XXXX	37504000	–	625	B
4.000	4.875	0.481	0.688	4.002	4.873	XXXX	43704000	–	625	B
4.000	4.875	0.481	0.825	4.002	4.873	XXXX	43704000	–	750	B
4.000	5.000	0.550	0.825	4.002	4.998	XXXX	50004000	–	750	B
4.000	5.250	0.688	1.100	4.003	5.247	XXXX	62504000	–	1000	B
4.000	5.500	0.825	1.375	4.003	5.497	XXXX	75004000	–	1250	B
4.062	4.562	0.275	0.413	4.063	4.561	XXXX	25004062	–	375	B
4.125	4.500	0.206	0.413	4.126	4.499	XXXX	18704125	–	375	B
4.125	4.625	0.275	0.618	4.126	4.624	XXXX	25004125	–	562	B
4.125	4.750	0.343	0.618	4.127	4.748	XXXX	31204125	–	562	B
4.125	4.875	0.413	0.688	4.127	4.873	XXXX	37504125	–	625	B
4.125	5.125	0.550	0.825	4.127	5.123	XXXX	50004125	–	750	B
4.125	5.250	0.618	0.963	4.127	5.248	XXXX	56204125	–	875	B

*If used with wear rings, refer to wear ring throat diameter, see Section 9, Catalog EPS5370.

**If used with wear rings, refer to wear ring piston diameter, see Section 9, Catalog EPS5370.

For custom groove calculations, see Appendix C, Catalog EPS5370.



Table 8. Standard, Deep and Type B PolyPak Gland Dimensions – Inch (Continued)

A Rod Diameter	B (Rod) Groove Diameter	C		D Throat Diameter*	E Piston Diameter**	Build Your Part Number				
		(Std. PP) Groove Width	(Deep & B) Groove Width			Material Code	Gland Depth & Seal Nominal ID (Refer to Profile Nomenclature)	Energizer Code (See Table 3)	Add to the part number for Type B or Deep only	Add to the part number for Type B only
4.250	4.500	0.138	0.275	4.251	4.499	XXXX	12504250	–	250	B
4.250	4.625	0.206	0.275	4.251	4.624	XXXX	18704250	–	250	B
4.250	4.625	0.206	0.309	4.251	4.624	XXXX	18704250	–	281	B
4.250	4.625	0.206	0.413	4.251	4.624	XXXX	18704250	–	375	B
4.250	4.750	0.275	0.413	4.251	4.749	XXXX	25004250	–	375	B
4.250	4.750	0.275	0.618	4.251	4.749	XXXX	25004250	–	562	B
4.250	4.875	0.343	0.618	4.252	4.873	XXXX	31204250	–	562	B
4.250	5.000	0.413	0.413	4.252	4.998	XXXX	37504250	–	375	B
4.250	5.000	0.413	0.550	4.252	4.998	XXXX	37504250	–	500	B
4.250	5.000	0.413	0.688	4.252	4.998	XXXX	37504250	–	625	B
4.250	5.250	0.550	0.825	4.252	5.248	XXXX	50004250	–	750	B
4.250	5.500	0.688	1.100	4.253	5.497	XXXX	62504250	–	1000	B
4.250	5.750	0.825	1.375	4.253	5.747	XXXX	75004250	–	1250	B
4.312	5.312	0.550	0.825	4.314	5.310	XXXX	50004312	–	750	B
4.375	4.625	0.138	0.275	4.376	4.624	XXXX	12504375	–	250	B
4.375	4.750	0.206	0.413	4.376	4.749	XXXX	18704375	–	375	B
4.375	4.875	0.275	0.618	4.376	4.874	XXXX	25004375	–	562	B
4.375	5.000	0.343	0.343	4.377	4.998	XXXX	31204375	–	312	B
4.375	5.000	0.343	0.550	4.377	4.998	XXXX	31204375	–	500	B
4.375	5.000	0.343	0.618	4.377	4.998	XXXX	31204375	–	562	B
4.375	5.125	0.413	0.688	4.377	5.123	XXXX	37504375	–	625	B
4.375	5.375	0.550	0.688	4.377	5.373	XXXX	50004375	–	625	B
4.375	5.375	0.550	0.825	4.377	5.373	XXXX	50004375	–	750	B
4.397	5.147	0.413	0.688	4.399	5.145	XXXX	37504397	–	625	B
4.416	4.916	0.275	0.618	4.417	4.915	XXXX	25004416	–	562	B
4.437	4.937	0.275	0.413	4.438	4.936	XXXX	25004437	–	375	B
4.437	5.000	0.309	0.550	4.438	4.999	XXXX	28104437	–	500	B
4.500	4.750	0.138	0.206	4.501	4.749	XXXX	12504500	–	187	B
4.500	4.875	0.206	0.206	4.501	4.874	XXXX	18704500	–	187	B
4.500	4.875	0.206	0.413	4.501	4.874	XXXX	18704500	–	375	B
4.500	5.000	0.275	0.275	4.501	4.999	XXXX	25004500	–	250	B
4.500	5.000	0.275	0.413	4.501	4.999	XXXX	25004500	–	375	B
4.500	5.000	0.275	0.550	4.501	4.999	XXXX	25004500	–	500	B
4.500	5.000	0.275	0.618	4.501	4.999	XXXX	25004500	–	562	B
4.500	5.125	0.343	0.618	4.502	5.123	XXXX	31204500	–	562	B
4.500	5.125	0.343	0.688	4.502	5.123	XXXX	31204500	–	625	B
4.500	5.250	0.413	0.688	4.502	5.248	XXXX	37504500	–	625	B
4.500	5.375	0.481	0.825	4.502	5.373	XXXX	43704500	–	750	B
4.500	5.500	0.550	0.825	4.502	5.498	XXXX	50004500	–	750	B
4.500	5.750	0.688	1.100	4.503	5.747	XXXX	62504500	–	1000	B
4.500	6.000	0.825	1.375	4.503	5.997	XXXX	75004500	–	1250	B
4.625	5.000	0.206	0.413	4.626	4.999	XXXX	18704625	–	375	B
4.625	5.125	0.275	0.618	4.626	5.124	XXXX	25004625	–	562	B
4.625	5.250	0.343	0.688	4.627	5.248	XXXX	31204625	–	625	B

*If used with wear rings, refer to wear ring throat diameter, see Section 9, Catalog EPS5370.

**If used with wear rings, refer to wear ring piston diameter, see Section 9, Catalog EPS5370.

For custom groove calculations, see Appendix C, Catalog EPS5370.

Standard, Deep and Type B PolyPak Profile

Table 8. Standard, Deep and Type B PolyPak Gland Dimensions – Inch (Continued)

A	B	C		D	E	Build Your Part Number				
		(Std. PP) Groove Width	(Deep & B) Groove Width			Throat Diameter*	Material Code	Gland Depth & Seal Nominal ID (Refer to Profile Nomenclature)	Energizer Code (See Table 3)	Add to the part number for Type B or Deep only
(Rod) Groove Diameter	(Bore) Groove Diameter	(Rod) Groove Diameter	(Bore) Groove Diameter	Piston Diameter**						
4.625	5.375	0.413	0.688	4.627	5.373	XXXX	37504625	–	625	B
4.625	5.875	0.688	1.100	4.628	5.872	XXXX	62504625	–	1000	B
4.687	5.250	0.309	0.688	4.688	5.249	XXXX	28104687	–	625	B
4.750	5.000	0.138	0.275	4.751	4.999	XXXX	12504750	–	250	B
4.750	5.125	0.206	0.413	4.751	5.124	XXXX	18704750	–	375	B
4.750	5.250	0.275	0.413	4.751	5.249	XXXX	25004750	–	375	B
4.750	5.250	0.275	0.618	4.751	5.249	XXXX	25004750	–	562	B
4.750	5.375	0.343	0.688	4.752	5.373	XXXX	31204750	–	625	B
4.750	5.500	0.413	0.550	4.752	5.498	XXXX	37504750	–	500	B
4.750	5.500	0.413	0.688	4.752	5.498	XXXX	37504750	–	625	B
4.750	5.625	0.481	0.688	4.752	5.623	XXXX	43704750	–	625	B
4.750	5.625	0.481	0.825	4.752	5.623	XXXX	43704750	–	750	B
4.750	5.750	0.550	0.756	4.752	5.748	XXXX	50004750	–	687	B
4.750	5.750	0.550	0.825	4.752	5.748	XXXX	50004750	–	750	B
4.750	6.000	0.688	1.100	4.753	5.997	XXXX	62504750	–	1000	B
4.750	6.250	0.825	1.375	4.753	6.247	XXXX	75004750	–	1250	B
4.875	5.250	0.206	0.413	4.876	5.249	XXXX	18704875	–	375	B
4.875	5.250	0.206	0.618	4.876	5.249	XXXX	18704875	–	562	B
4.875	5.375	0.275	0.413	4.876	5.374	XXXX	25004875	–	375	B
4.875	5.375	0.275	0.618	4.876	5.374	XXXX	25004875	–	562	B
4.875	5.500	0.343	0.343	4.877	5.498	XXXX	31204875	–	312	B
4.875	5.500	0.343	0.688	4.877	5.498	XXXX	31204875	–	625	B
4.875	5.625	0.413	0.688	4.877	5.623	XXXX	37504875	–	625	B
4.875	5.750	0.481	0.618	4.877	5.748	XXXX	43704875	–	562	B
4.875	5.875	0.550	0.618	4.877	5.873	XXXX	50004875	–	562	B
4.937	5.500	0.309	0.377	4.938	5.499	XXXX	28104937	–	343	B
4.937	5.500	0.309	0.550	4.938	5.499	XXXX	28104937	–	500	B
5.000	5.250	0.138	0.275	5.001	5.249	XXXX	12505000	–	250	B
5.000	5.375	0.206	0.309	5.001	5.374	XXXX	18705000	–	281	B
5.000	5.375	0.206	0.413	5.001	5.374	XXXX	18705000	–	375	B
5.000	5.500	0.275	0.413	5.001	5.499	XXXX	25005000	–	375	B
5.000	5.500	0.275	0.618	5.001	5.499	XXXX	25005000	–	562	B
5.000	5.562	0.309	0.381	5.001	5.561	XXXX	28105000	–	346	B
5.000	5.625	0.343	0.688	5.002	5.623	XXXX	31205000	–	625	B
5.000	5.750	0.413	0.413	5.002	5.748	XXXX	37505000	–	375	B
5.000	5.750	0.413	0.550	5.002	5.748	XXXX	37505000	–	500	B
5.000	5.750	0.413	0.688	5.002	5.748	XXXX	37505000	–	625	B
5.000	5.875	0.481	0.825	5.002	5.873	XXXX	43705000	–	750	B
5.000	6.000	0.550	0.825	5.002	5.998	XXXX	50005000	–	750	B
5.000	6.250	0.688	1.100	5.003	6.247	XXXX	62505000	–	1000	B
5.000	6.500	0.825	1.375	5.003	6.497	XXXX	75005000	–	1250	B
5.000	7.000	1.100	1.650	5.004	6.996	XXXX	100005000	–	1500	B
5.125	5.625	0.275	0.618	5.126	5.624	XXXX	25005125	–	562	B
5.125	5.750	0.343	0.688	5.127	5.748	XXXX	31205125	–	625	B
5.125	5.875	0.413	0.688	5.127	5.873	XXXX	37505125	–	625	B

*If used with wear rings, refer to wear ring throat diameter, see Section 9, Catalog EPS5370.

**If used with wear rings, refer to wear ring piston diameter, see Section 9, Catalog EPS5370.

For custom groove calculations, see Appendix C, Catalog EPS5370.



Table 8. Standard, Deep and Type B PolyPak Gland Dimensions – Inch (Continued)

A Rod Diameter	B (Rod) Groove Diameter	C		D Throat Diameter*	E Piston Diameter**	Build Your Part Number				
		(Std. PP) Groove Width	(Deep & B) Groove Width			Material Code	Gland Depth & Seal Nominal ID (Refer to Profile Nomenclature)	Energizer Code (See Table 3)	Add to the part number for Type B or Deep only	Add to the part number for Type B only
5.125	6.000	0.481	0.550	5.127	5.998	XXXX	43705125	–	500	B
5.125	6.125	0.550	0.825	5.127	6.123	XXXX	50005125	–	750	B
5.250	5.625	0.206	0.413	5.251	5.624	XXXX	18705250	–	375	B
5.250	5.750	0.275	0.413	5.251	5.749	XXXX	25005250	–	375	B
5.250	5.750	0.275	0.618	5.251	5.749	XXXX	25005250	–	562	B
5.250	5.875	0.343	0.550	5.252	5.873	XXXX	31205250	–	500	B
5.250	5.875	0.343	0.688	5.252	5.873	XXXX	31205250	–	625	B
5.250	6.000	0.413	0.413	5.252	5.998	XXXX	37505250	–	375	B
5.250	6.000	0.413	0.550	5.252	5.998	XXXX	37505250	–	500	B
5.250	6.000	0.413	0.688	5.252	5.998	XXXX	37505250	–	625	B
5.250	6.250	0.550	0.550	5.252	6.248	XXXX	50005250	–	500	B
5.250	6.250	0.550	0.825	5.252	6.248	XXXX	50005250	–	750	B
5.250	6.500	0.688	1.100	5.253	6.497	XXXX	62505250	–	1000	B
5.375	5.875	0.275	0.413	5.376	5.874	XXXX	25005375	–	375	B
5.375	5.875	0.275	0.618	5.376	5.874	XXXX	25005375	–	562	B
5.375	6.000	0.343	0.688	5.377	5.998	XXXX	31205375	–	625	B
5.375	6.125	0.413	0.688	5.377	6.123	XXXX	37505375	–	625	B
5.375	6.375	0.550	0.825	5.377	6.373	XXXX	50005375	–	750	B
5.437	6.000	0.309	0.550	5.438	5.999	XXXX	28105437	–	500	B
5.437	6.437	0.550	0.825	5.439	6.435	XXXX	50005437	–	750	B
5.500	5.875	0.206	0.413	5.501	5.874	XXXX	18705500	–	375	B
5.500	6.000	0.275	0.413	5.501	5.999	XXXX	25005500	–	375	B
5.500	6.000	0.275	0.618	5.501	5.999	XXXX	25005500	–	562	B
5.500	6.125	0.343	0.343	5.502	6.123	XXXX	31205500	–	312	B
5.500	6.125	0.343	0.413	5.502	6.123	XXXX	31205500	–	374	B
5.500	6.125	0.343	0.550	5.502	6.123	XXXX	31205500	–	500	B
5.500	6.125	0.343	0.688	5.502	6.123	XXXX	31205500	–	625	B
5.500	6.250	0.413	0.688	5.502	6.248	XXXX	37505500	–	625	B
5.500	6.375	0.481	0.825	5.502	6.373	XXXX	43705500	–	750	B
5.500	6.500	0.550	0.825	5.502	6.498	XXXX	50005500	–	750	B
5.500	6.625	0.618	0.963	5.502	6.623	XXXX	56205500	–	875	B
5.500	6.750	0.688	1.100	5.503	6.747	XXXX	62505500	–	1000	B
5.500	7.000	0.825	1.375	5.503	6.997	XXXX	75005500	–	1250	B
5.625	6.125	0.275	0.618	5.626	6.124	XXXX	25005625	–	562	B
5.625	6.250	0.343	0.688	5.627	6.248	XXXX	31205625	–	625	B
5.625	6.375	0.413	0.688	5.627	6.373	XXXX	37505625	–	625	B
5.687	6.062	0.206	0.413	5.688	6.061	XXXX	18705687	–	375	B
5.750	6.000	0.138	0.275	5.751	5.999	XXXX	12505750	–	250	B
5.750	6.250	0.275	0.413	5.751	6.249	XXXX	25005750	–	375	B
5.750	6.250	0.275	0.618	5.751	6.249	XXXX	25005750	–	562	B
5.750	6.375	0.343	0.688	5.752	6.373	XXXX	31205750	–	625	B
5.750	6.500	0.413	0.550	5.752	6.498	XXXX	37505750	–	500	B
5.750	6.500	0.413	0.688	5.752	6.498	XXXX	37505750	–	625	B
5.750	6.750	0.550	0.825	5.752	6.748	XXXX	50005750	–	750	B

*If used with wear rings, refer to wear ring throat diameter, see Section 9, Catalog EPS5370.

**If used with wear rings, refer to wear ring piston diameter, see Section 9, Catalog EPS5370.

For custom groove calculations, see Appendix C, Catalog EPS5370.

Standard, Deep and Type B PolyPak Profile

Table 8. Standard, Deep and Type B PolyPak Gland Dimensions – Inch (Continued)

A Rod Diameter	B (Rod) Groove Diameter	C		D Throat Diameter*	E Piston Diameter**	Build Your Part Number				
		(Std. PP) Groove Width	(Deep & B) Groove Width			Material Code	Gland Depth & Seal Nominal ID (Refer to Profile Nomenclature)	Energizer Code (See Table 3)	Add to the part number for Type B or Deep only	Add to the part number for Type B only
5.750	7.000	0.688	1.100	5.753	6.997	XXXX	62505750	–	1000	B
5.812	6.312	0.275	0.413	5.813	6.311	XXXX	25005812	–	375	B
5.875	6.250	0.206	0.413	5.876	6.249	XXXX	18705875	–	375	B
5.875	6.375	0.275	0.413	5.876	6.374	XXXX	25005875	–	375	B
5.875	6.375	0.275	0.618	5.876	6.374	XXXX	25005875	–	562	B
5.875	6.500	0.343	0.343	5.877	6.498	XXXX	31205875	–	312	B
5.875	6.500	0.343	0.688	5.877	6.498	XXXX	31205875	–	625	B
5.875	6.625	0.413	0.688	5.877	6.623	XXXX	37505875	–	625	B
5.937	6.500	0.309	0.550	5.938	6.499	XXXX	28105937	–	500	B
6.000	6.375	0.206	0.413	6.001	6.374	XXXX	18706000	–	375	B
6.000	6.500	0.275	0.413	6.001	6.499	XXXX	25006000	–	375	B
6.000	6.500	0.275	0.481	6.001	6.499	XXXX	25006000	–	437	B
6.000	6.500	0.275	0.618	6.001	6.499	XXXX	25006000	–	562	B
6.000	6.625	0.343	0.688	6.002	6.623	XXXX	31206000	–	625	B
6.000	6.750	0.413	0.550	6.002	6.748	XXXX	37506000	–	500	B
6.000	6.750	0.413	0.688	6.002	6.748	XXXX	37506000	–	625	B
6.000	7.000	0.550	0.825	6.002	6.998	XXXX	50006000	–	750	B
6.000	7.250	0.688	1.100	6.003	7.247	XXXX	62506000	–	1000	B
6.000	7.500	0.825	1.375	6.003	7.497	XXXX	75006000	–	1250	B
6.000	8.000	1.100	1.650	6.004	7.996	XXXX	100006000	–	1500	B
6.125	6.625	0.275	0.413	6.126	6.624	XXXX	25006125	–	375	B
6.125	6.750	0.343	0.688	6.127	6.748	XXXX	31206125	–	625	B
6.250	6.750	0.275	0.413	6.251	6.749	XXXX	25006250	–	375	B
6.250	6.750	0.275	0.618	6.251	6.749	XXXX	25006250	–	562	B
6.250	7.000	0.413	0.550	6.252	6.998	XXXX	37506250	–	500	B
6.250	7.000	0.413	0.688	6.252	6.998	XXXX	37506250	–	625	B
6.250	7.250	0.550	0.825	6.252	7.248	XXXX	50006250	–	750	B
6.250	7.500	0.688	1.100	6.253	7.497	XXXX	62506250	–	1000	B
6.250	7.750	0.825	1.375	6.253	7.747	XXXX	75006250	–	1250	B
6.312	6.687	0.206	0.413	6.313	6.686	XXXX	18706312	–	375	B
6.375	7.000	0.343	0.688	6.377	6.998	XXXX	31206375	–	625	B
6.375	7.375	0.550	0.825	6.377	7.373	XXXX	50006375	–	750	B
6.437	7.000	0.309	0.550	6.438	6.999	XXXX	28106437	–	500	B
6.500	7.000	0.275	0.413	6.501	6.999	XXXX	25006500	–	375	B
6.500	7.000	0.275	0.618	6.501	6.999	XXXX	25006500	–	562	B
6.500	7.125	0.343	0.688	6.502	7.123	XXXX	31206500	–	625	B
6.500	7.250	0.413	0.413	6.502	7.248	XXXX	37506500	–	375	B
6.500	7.250	0.413	0.550	6.502	7.248	XXXX	37506500	–	500	B
6.500	7.250	0.413	0.688	6.502	7.248	XXXX	37506500	–	625	B
6.500	7.500	0.550	0.825	6.502	7.498	XXXX	50006500	–	750	B
6.500	7.750	0.688	1.100	6.503	7.747	XXXX	62506500	–	1000	B
6.500	8.000	0.825	1.375	6.503	7.997	XXXX	75006500	–	1250	B
6.625	7.125	0.275	0.413	6.626	7.124	XXXX	25006625	–	375	B
6.625	7.250	0.343	0.688	6.627	7.248	XXXX	31206625	–	625	B
6.625	7.875	0.688	1.100	6.628	7.872	XXXX	62506625	–	1000	B

*If used with wear rings, refer to wear ring throat diameter, see Section 9, Catalog EPS5370.

**If used with wear rings, refer to wear ring piston diameter, see Section 9, Catalog EPS5370.

For custom groove calculations, see Appendix C, Catalog EPS5370.



Table 8. Standard, Deep and Type B PolyPak Gland Dimensions – Inch (Continued)

A Rod Diameter	B (Rod) Groove Diameter	C		D Throat Diameter*	E Piston Diameter**	Build Your Part Number				
		(Std. PP) Groove Width	(Deep & B) Groove Width			Material Code	Gland Depth & Seal Nominal ID (Refer to Profile Nomenclature)	Energizer Code (See Table 3)	Add to the part number for Type B or Deep only	Add to the part number for Type B only
6.750	7.250	0.275	0.413	6.751	7.249	XXXX	25006750	–	375	B
6.750	7.250	0.275	0.618	6.751	7.249	XXXX	25006750	–	562	B
6.750	7.375	0.343	0.688	6.752	7.373	XXXX	31206750	–	625	B
6.750	7.500	0.413	0.413	6.752	7.498	XXXX	37506750	–	375	B
6.750	7.500	0.413	0.550	6.752	7.498	XXXX	37506750	–	500	B
6.750	7.500	0.413	0.618	6.752	7.498	XXXX	37506750	–	562	B
6.750	7.500	0.413	0.688	6.752	7.498	XXXX	37506750	–	625	B
6.750	7.750	0.550	0.825	6.752	7.748	XXXX	50006750	–	750	B
6.750	7.875	0.618	0.963	6.752	7.873	XXXX	56206750	–	875	B
6.750	8.000	0.688	1.100	6.753	7.997	XXXX	62506750	–	1000	B
6.875	7.625	0.413	0.688	6.877	7.623	XXXX	37506875	–	625	B
6.875	8.125	0.688	1.100	6.878	8.122	XXXX	62506875	–	1000	B
6.937	7.500	0.309	0.550	6.938	7.499	XXXX	28106937	–	500	B
7.000	7.375	0.206	0.413	7.001	7.374	XXXX	18707000	–	375	B
7.000	7.500	0.275	0.413	7.001	7.499	XXXX	25007000	–	375	B
7.000	7.500	0.275	0.618	7.001	7.499	XXXX	25007000	–	562	B
7.000	7.625	0.343	0.688	7.002	7.623	XXXX	31207000	–	625	B
7.000	7.750	0.413	0.550	7.002	7.748	XXXX	37507000	–	500	B
7.000	7.750	0.413	0.688	7.002	7.748	XXXX	37507000	–	625	B
7.000	8.000	0.550	0.825	7.002	7.998	XXXX	50007000	–	750	B
7.000	8.250	0.688	1.100	7.003	8.247	XXXX	62507000	–	1000	B
7.000	8.500	0.825	1.375	7.003	8.497	XXXX	75007000	–	1250	B
7.000	9.000	1.100	1.650	7.004	8.996	XXXX	100007000	–	1500	B
7.125	7.625	0.275	0.413	7.126	7.624	XXXX	25007125	–	375	B
7.187	8.000	0.447	0.688	7.189	7.998	XXXX	40607187	–	625	B
7.250	7.750	0.275	0.618	7.251	7.749	XXXX	25007250	–	562	B
7.250	7.875	0.343	0.688	7.252	7.873	XXXX	31207250	–	625	B
7.250	8.000	0.413	0.688	7.252	7.998	XXXX	37507250	–	625	B
7.250	8.250	0.550	0.825	7.252	8.248	XXXX	50007250	–	750	B
7.250	8.500	0.688	1.100	7.253	8.497	XXXX	62507250	–	1000	B
7.375	7.750	0.206	0.413	7.376	7.749	XXXX	18707375	–	375	B
7.375	8.000	0.343	0.688	7.377	7.998	XXXX	31207375	–	625	B
7.375	8.125	0.413	0.550	7.377	8.123	XXXX	37507375	–	500	B
7.404	8.028	0.343	0.688	7.406	8.026	XXXX	31207404	–	625	B
7.500	7.875	0.206	0.275	7.501	7.874	XXXX	18707500	–	250	B
7.500	8.000	0.275	0.618	7.501	7.999	XXXX	25007500	–	562	B
7.500	8.125	0.343	0.688	7.502	8.123	XXXX	31207500	–	625	B
7.500	8.250	0.413	0.550	7.502	8.248	XXXX	37507500	–	500	B
7.500	8.250	0.413	0.688	7.502	8.248	XXXX	37507500	–	625	B
7.500	8.500	0.550	0.825	7.502	8.498	XXXX	50007500	–	750	B
7.500	8.750	0.688	1.100	7.503	8.747	XXXX	62507500	–	1000	B
7.500	9.000	0.825	1.375	7.503	8.997	XXXX	75007500	–	1250	B
7.500	9.500	1.100	1.650	7.504	9.496	XXXX	100007500	–	1500	B
7.625	8.250	0.343	0.550	7.627	8.248	XXXX	31207625	–	500	B

*If used with wear rings, refer to wear ring throat diameter, see Section 9, Catalog EPS5370.

**If used with wear rings, refer to wear ring piston diameter, see Section 9, Catalog EPS5370.

For custom groove calculations, see Appendix C, Catalog EPS5370.

Standard, Deep and Type B PolyPak Profile

Table 8. Standard, Deep and Type B PolyPak Gland Dimensions – Inch (Continued)

A	B	C		D	E	Build Your Part Number				
		(Std. PP) Groove Width	(Deep & B) Groove Width			Throat Diameter*	Material Code	Gland Depth & Seal Nominal ID (Refer to Profile Nomenclature)	Energizer Code (See Table 3)	Add to the part number for Type B or Deep only
(Rod) Groove Diameter	(Bore) Groove Diameter	(Bore) Diameter	Piston Diameter**							
7.625	8.375	0.413	0.688	7.627	8.373	XXXX	37507625	–	625	B
7.750	8.250	0.275	0.618	7.751	8.249	XXXX	25007750	–	562	B
7.750	8.375	0.343	0.688	7.752	8.373	XXXX	31207750	–	625	B
7.750	8.500	0.413	0.550	7.752	8.498	XXXX	37507750	–	500	B
7.750	8.500	0.413	0.688	7.752	8.498	XXXX	37507750	–	625	B
7.750	8.750	0.550	0.825	7.752	8.748	XXXX	50007750	–	750	B
7.750	9.000	0.688	1.100	7.753	8.997	XXXX	62507750	–	1000	B
7.790	8.540	0.413	0.413	7.792	8.538	XXXX	37507790	–	375	B
7.875	8.500	0.343	0.688	7.877	8.498	XXXX	31207875	–	625	B
7.875	8.625	0.413	0.688	7.877	8.623	XXXX	37507875	–	625	B
7.875	8.875	0.550	0.825	7.877	8.873	XXXX	50007875	–	750	B
8.000	8.500	0.275	0.618	8.001	8.499	XXXX	25008000	–	562	B
8.000	8.625	0.343	0.688	8.002	8.623	XXXX	31208000	–	625	B
8.000	8.750	0.413	0.550	8.002	8.748	XXXX	37508000	–	500	B
8.000	8.750	0.413	0.688	8.002	8.748	XXXX	37508000	–	625	B
8.000	9.000	0.550	0.825	8.002	8.998	XXXX	50008000	–	750	B
8.000	9.250	0.688	1.100	8.003	9.247	XXXX	62508000	–	1000	B
8.000	9.500	0.825	1.238	8.003	9.497	XXXX	75008000	–	1125	B
8.000	9.500	0.825	1.375	8.003	9.497	XXXX	75008000	–	1250	B
8.000	10.000	1.100	1.650	8.004	9.996	XXXX	100008000	–	1500	B
8.125	8.625	0.275	0.618	8.126	8.624	XXXX	25008125	–	562	B
8.187	9.437	0.688	1.100	8.190	9.434	XXXX	62508187	–	1000	B
8.250	8.750	0.275	0.413	8.251	8.749	XXXX	25008250	–	375	B
8.250	8.750	0.275	0.618	8.251	8.749	XXXX	25008250	–	562	B
8.250	9.000	0.413	0.688	8.252	8.998	XXXX	37508250	–	625	B
8.250	9.250	0.550	0.825	8.252	9.248	XXXX	50008250	–	750	B
8.250	9.500	0.688	1.100	8.253	9.497	XXXX	62508250	–	1000	B
8.250	9.750	0.825	1.375	8.253	9.747	XXXX	75008250	–	1250	B
8.375	9.000	0.343	0.688	8.377	8.998	XXXX	31208375	–	625	B
8.375	9.875	0.825	1.375	8.378	9.872	XXXX	75008375	–	1250	B
8.500	9.000	0.275	0.618	8.501	8.999	XXXX	25008500	–	562	B
8.500	9.125	0.343	0.688	8.502	9.123	XXXX	31208500	–	625	B
8.500	9.250	0.413	0.688	8.502	9.248	XXXX	37508500	–	625	B
8.500	9.500	0.550	0.825	8.502	9.498	XXXX	50008500	–	750	B
8.500	9.750	0.688	1.100	8.503	9.747	XXXX	62508500	–	1000	B
8.500	10.000	0.825	1.238	8.503	9.997	XXXX	75008500	–	1125	B
8.500	10.000	0.825	1.375	8.503	9.997	XXXX	75008500	–	1250	B
8.500	10.250	0.963	1.513	8.504	10.246	XXXX	87508500	–	1375	B
8.625	9.375	0.413	0.688	8.627	9.373	XXXX	37508625	–	625	B
8.625	9.875	0.688	1.100	8.628	9.872	XXXX	62508625	–	1000	B
8.750	9.250	0.275	0.618	8.751	9.249	XXXX	25008750	–	562	B
8.750	9.500	0.413	0.413	8.752	9.498	XXXX	37508750	–	375	B
8.750	9.500	0.413	0.550	8.752	9.498	XXXX	37508750	–	500	B
8.750	9.500	0.413	0.688	8.752	9.498	XXXX	37508750	–	625	B

*If used with wear rings, refer to wear ring throat diameter, see Section 9, Catalog EPS5370.

**If used with wear rings, refer to wear ring piston diameter, see Section 9, Catalog EPS5370.

For custom groove calculations, see Appendix C, Catalog EPS5370.



Table 8. Standard, Deep and Type B PolyPak Gland Dimensions – Inch (Continued)

A Rod Diameter	B (Rod) Groove Diameter	C		D Throat Diameter*	E Piston Diameter**	Build Your Part Number				
		(Std. PP) Groove Width	(Deep & B) Groove Width			Material Code	Gland Depth & Seal Nominal ID (Refer to Profile Nomenclature)	Energizer Code (See Table 3)	Add to the part number for Type B or Deep only	Add to the part number for Type B only
8.750	9.500	0.413	0.825	8.752	9.498	XXXX	37508750	–	750	B
8.750	9.750	0.550	0.825	8.752	9.748	XXXX	50008750	–	750	B
8.750	10.000	0.688	1.100	8.753	9.997	XXXX	62508750	–	1000	B
8.795	9.545	0.413	0.413	8.797	9.543	XXXX	37508795	–	375	B
8.875	9.500	0.343	0.688	8.877	9.498	XXXX	31208875	–	625	B
8.875	9.625	0.413	0.688	8.877	9.623	XXXX	37508875	–	625	B
8.937	9.500	0.309	0.550	8.938	9.499	XXXX	28108937	–	500	B
9.000	9.500	0.275	0.413	9.001	9.499	XXXX	25009000	–	375	B
9.000	9.625	0.343	0.550	9.002	9.623	XXXX	31209000	–	500	B
9.000	9.750	0.413	0.688	9.002	9.748	XXXX	37509000	–	625	B
9.000	10.000	0.550	0.825	9.002	9.998	XXXX	50009000	–	750	B
9.000	10.250	0.688	1.100	9.003	10.247	XXXX	62509000	–	1000	B
9.000	10.500	0.825	1.375	9.003	10.497	XXXX	75009000	–	1250	B
9.125	9.750	0.343	0.688	9.127	9.748	XXXX	31209125	–	625	B
9.250	9.750	0.275	0.618	9.251	9.749	XXXX	25009250	–	562	B
9.250	9.875	0.343	0.688	9.252	9.873	XXXX	31209250	–	625	B
9.250	10.000	0.413	0.550	9.252	9.998	XXXX	37509250	–	500	B
9.250	10.000	0.413	0.688	9.252	9.998	XXXX	37509250	–	625	B
9.250	10.250	0.550	0.825	9.252	10.248	XXXX	50009250	–	750	B
9.250	10.500	0.688	1.100	9.253	10.497	XXXX	62509250	–	1000	B
9.312	10.000	0.377	0.688	9.314	9.998	XXXX	34309312	–	625	B
9.375	10.000	0.343	0.688	9.377	9.998	XXXX	31209375	–	625	B
9.500	10.000	0.275	0.413	9.501	9.999	XXXX	25009500	–	375	B
9.500	10.000	0.275	0.618	9.501	9.999	XXXX	25009500	–	562	B
9.500	10.125	0.343	0.688	9.502	10.123	XXXX	31209500	–	625	B
9.500	10.250	0.413	0.688	9.502	10.248	XXXX	37509500	–	625	B
9.500	10.500	0.550	0.825	9.502	10.498	XXXX	50009500	–	750	B
9.500	11.000	0.825	1.375	9.503	10.997	XXXX	75009500	–	1250	B
9.500	11.500	1.100	1.650	9.504	11.496	XXXX	100009500	–	1500	B
9.625	10.250	0.343	0.688	9.627	10.248	XXXX	31209625	–	625	B
9.625	10.375	0.413	0.688	9.627	10.373	XXXX	37509625	–	625	B
9.625	11.500	1.031	1.650	9.629	11.496	XXXX	93709625	–	1500	B
9.750	10.250	0.275	0.413	9.751	10.249	XXXX	25009750	–	375	B
9.750	10.250	0.275	0.618	9.751	10.249	XXXX	25009750	–	562	B
9.750	10.375	0.343	0.688	9.752	10.373	XXXX	31209750	–	625	B
9.750	10.500	0.413	0.688	9.752	10.498	XXXX	37509750	–	625	B
9.750	10.750	0.550	0.825	9.752	10.748	XXXX	50009750	–	750	B
9.750	11.250	0.825	1.375	9.753	11.247	XXXX	75009750	–	1250	B
9.750	11.500	0.963	1.513	9.754	11.496	XXXX	87509750	–	1375	B
9.812	11.312	0.825	1.375	9.815	11.309	XXXX	75009812	–	1250	B
9.875	10.625	0.413	0.688	9.877	10.623	XXXX	37509875	–	625	B
9.875	10.875	0.550	0.825	9.877	10.873	XXXX	50009875	–	750	B
10.000	10.500	0.275	0.618	10.001	10.499	XXXX	25010000	–	562	B
10.000	10.625	0.343	0.688	10.002	10.623	XXXX	31210000	–	625	B

*If used with wear rings, refer to wear ring throat diameter, see Section 9, Catalog EPS5370.

**If used with wear rings, refer to wear ring piston diameter, see Section 9, Catalog EPS5370.

For custom groove calculations, see Appendix C, Catalog EPS5370.

Standard, Deep and Type B PolyPak Profile

Table 8. Standard, Deep and Type B PolyPak Gland Dimensions – Inch (Continued)

A Rod Diameter	B (Rod) Groove Diameter	C		D Throat Diameter*	E Piston Diameter**	Build Your Part Number				
		(Std. PP) Groove Width	(Deep & B) Groove Width			Material Code	Gland Depth & Seal Nominal ID (Refer to Profile Nomenclature)	Energizer Code (See Table 3)	Add to the part number for Type B or Deep only	Add to the part number for Type B only
10.000	10.750	0.413	0.688	10.002	10.748	XXXX	37510000	–	625	B
10.000	11.000	0.550	0.825	10.002	10.998	XXXX	50010000	–	750	B
10.000	11.250	0.688	1.100	10.003	11.247	XXXX	62510000	–	1000	B
10.000	11.500	0.825	1.375	10.003	11.497	XXXX	75010000	–	1250	B
10.000	12.000	1.100	1.650	10.004	11.996	XXXX	100010000	–	1500	B
10.125	10.750	0.343	0.688	10.127	10.748	XXXX	31210125	–	625	B
10.125	10.875	0.413	0.688	10.127	10.873	XXXX	37510125	–	625	B
10.187	11.000	0.447	0.550	10.189	10.998	XXXX	40610187	–	500	B
10.250	10.750	0.275	0.618	10.251	10.749	XXXX	25010250	–	562	B
10.250	11.000	0.413	0.550	10.252	10.998	XXXX	37510250	–	500	B
10.250	11.000	0.413	0.688	10.252	10.998	XXXX	37510250	–	625	B
10.250	11.000	0.413	0.825	10.252	10.998	XXXX	37510250	–	750	B
10.250	11.250	0.550	0.825	10.252	11.248	XXXX	50010250	–	750	B
10.250	11.500	0.688	1.100	10.253	11.497	XXXX	62510250	–	1000	B
10.375	11.000	0.343	0.688	10.377	10.998	XXXX	31210375	–	625	B
10.500	11.000	0.275	0.550	10.501	10.999	XXXX	25010500	–	500	B
10.500	11.000	0.275	0.618	10.501	10.999	XXXX	25010500	–	562	B
10.500	11.125	0.343	0.550	10.502	11.123	XXXX	31210500	–	500	B
10.500	11.250	0.413	0.413	10.502	11.248	XXXX	37510500	–	375	B
10.500	11.250	0.413	0.688	10.502	11.248	XXXX	37510500	–	625	B
10.500	11.500	0.550	0.825	10.502	11.498	XXXX	50010500	–	750	B
10.500	11.750	0.688	0.825	10.503	11.747	XXXX	62510500	–	750	B
10.500	12.000	0.825	1.100	10.503	11.997	XXXX	75010500	–	1000	B
10.500	12.000	0.825	1.375	10.503	11.997	XXXX	75010500	–	1250	B
10.500	12.000	0.825	1.375	10.503	11.997	XXXX	75010750	–	1250	B
10.625	11.625	0.550	0.688	10.627	11.623	XXXX	50010625	–	625	B
10.625	11.625	0.550	0.825	10.627	11.623	XXXX	50010625	–	750	B
10.750	11.250	0.275	0.413	10.751	11.249	XXXX	25010750	–	375	B
10.750	11.500	0.413	0.688	10.752	11.498	XXXX	37510750	–	625	B
10.750	11.750	0.550	0.825	10.752	11.748	XXXX	50010750	–	750	B
11.000	11.500	0.275	0.618	11.001	11.499	XXXX	25011000	–	562	B
11.000	11.750	0.413	0.688	11.002	11.748	XXXX	37511000	–	625	B
11.000	12.000	0.550	0.825	11.002	11.998	XXXX	50011000	–	750	B
11.000	12.250	0.688	1.100	11.003	12.247	XXXX	62511000	–	1000	B
11.000	12.500	0.825	1.375	11.003	12.497	XXXX	75011000	–	1250	B
11.125	11.750	0.343	0.688	11.127	11.748	XXXX	31211125	–	625	B
11.250	11.750	0.275	0.413	11.251	11.749	XXXX	25011250	–	375	B
11.250	11.750	0.275	0.618	11.251	11.749	XXXX	25011250	–	562	B
11.250	12.000	0.413	0.688	11.252	11.998	XXXX	37511250	–	625	B
11.250	12.250	0.550	0.825	11.252	12.248	XXXX	50011250	–	750	B
11.250	12.500	0.688	1.100	11.253	12.497	XXXX	62511250	–	1000	B
11.375	12.375	0.550	0.825	11.377	12.373	XXXX	50011375	–	750	B
11.500	12.000	0.275	0.618	11.501	11.999	XXXX	25011500	–	562	B
11.500	12.250	0.413	0.688	11.502	12.248	XXXX	37511500	–	625	B

*If used with wear rings, refer to wear ring throat diameter, see Section 9, Catalog EPS5370.

**If used with wear rings, refer to wear ring piston diameter, see Section 9, Catalog EPS5370.

For custom groove calculations, see Appendix C, Catalog EPS5370.



Table 8. Standard, Deep and Type B PolyPak Gland Dimensions – Inch (Continued)

A Rod Diameter	B (Rod) Groove Diameter	C		D Throat Diameter*	E Piston Diameter**	Build Your Part Number				
		(Std. PP) Groove Width	(Deep & B) Groove Width			Material Code	Gland Depth & Seal Nominal ID (Refer to Profile Nomenclature)	Energizer Code (See Table 3)	Add to the part number for Type B or Deep only	Add to the part number for Type B only
11.500	12.500	0.550	0.825	11.502	12.498	XXXX	50011500	–	750	B
11.500	12.750	0.688	1.100	11.503	12.747	XXXX	62511500	–	1000	B
11.500	13.000	0.825	1.375	11.503	12.997	XXXX	75011500	–	1250	B
11.750	12.250	0.275	0.413	11.751	12.249	XXXX	25011750	–	375	B
11.750	12.500	0.413	0.688	11.752	12.498	XXXX	37511750	–	625	B
11.750	12.500	0.413	0.825	11.752	12.498	XXXX	37511750	–	750	B
11.750	12.750	0.550	0.825	11.752	12.748	XXXX	50011750	–	750	B
11.750	13.000	0.688	1.100	11.753	12.997	XXXX	62511750	–	1000	B
11.875	12.875	0.550	0.825	11.877	12.873	XXXX	50011875	–	750	B
12.000	12.500	0.275	0.413	12.001	12.499	XXXX	25012000	–	375	B
12.000	12.625	0.343	0.688	12.002	12.623	XXXX	31212000	–	625	B
12.000	12.750	0.413	0.688	12.002	12.748	XXXX	37512000	–	625	B
12.000	13.000	0.550	0.825	12.002	12.998	XXXX	50012000	–	750	B
12.000	13.250	0.688	1.100	12.003	13.247	XXXX	62512000	–	1000	B
12.000	13.500	0.825	1.375	12.003	13.497	XXXX	75012000	–	1250	B
12.000	14.000	1.100	1.650	12.004	13.996	XXXX	100012000	–	1500	B
12.125	13.125	0.550	0.825	12.127	13.123	XXXX	50012125	–	750	B
12.250	12.875	0.343	0.688	12.252	12.873	XXXX	31212250	–	625	B
12.250	13.000	0.413	0.688	12.252	12.998	XXXX	37512250	–	625	B
12.250	13.250	0.550	0.825	12.252	13.248	XXXX	50012250	–	750	B
12.250	13.500	0.688	1.100	12.253	13.497	XXXX	62512250	–	1000	B
12.250	13.875	0.893	1.238	12.253	13.872	XXXX	81212250	–	1125	B
12.500	13.000	0.275	0.413	12.501	12.999	XXXX	25012500	–	375	B
12.500	13.125	0.343	0.688	12.502	13.123	XXXX	31212500	–	625	B
12.500	13.500	0.550	0.825	12.502	13.498	XXXX	50012500	–	750	B
12.500	13.750	0.688	1.100	12.503	13.747	XXXX	62512500	–	1000	B
12.500	14.000	0.825	1.375	12.503	13.997	XXXX	75012500	–	1250	B
12.500	14.500	1.100	1.650	12.504	14.496	XXXX	100012500	–	1500	B
12.562	13.686	0.618	0.963	12.564	13.684	XXXX	56212562	–	875	B
12.562	13.812	0.688	0.963	12.565	13.809	XXXX	62501250	–	875	B
12.750	13.250	0.275	0.618	12.751	13.249	XXXX	25012750	–	562	B
12.750	13.375	0.343	0.688	12.752	13.373	XXXX	31212750	–	625	B
12.750	13.500	0.413	0.688	12.752	13.498	XXXX	37512750	–	625	B
12.750	13.750	0.550	0.825	12.752	13.748	XXXX	50012750	–	750	B
12.750	14.000	0.688	1.100	12.753	13.997	XXXX	62512750	–	1000	B
13.000	13.500	0.275	0.618	13.001	13.499	XXXX	25013000	–	562	B
13.000	13.750	0.413	0.413	13.002	13.748	XXXX	37513000	–	375	B
13.000	13.750	0.413	0.688	13.002	13.748	XXXX	37513000	–	625	B
13.000	14.000	0.550	0.825	13.002	13.998	XXXX	50013000	–	750	B
13.000	14.250	0.688	1.100	13.003	14.247	XXXX	62513000	–	1000	B
13.000	14.500	0.825	1.100	13.003	14.497	XXXX	75013000	–	1000	B
13.187	14.000	0.447	0.688	13.189	13.998	XXXX	40613187	–	625	B
13.250	14.000	0.413	0.618	13.252	13.998	XXXX	37513250	–	562	B
13.250	14.000	0.413	0.688	13.252	13.998	XXXX	37513250	–	625	B
13.250	14.250	0.550	0.825	13.252	14.248	XXXX	50013250	–	750	B

*If used with wear rings, refer to wear ring throat diameter, see Section 9, Catalog EPS5370.

**If used with wear rings, refer to wear ring piston diameter, see Section 9, Catalog EPS5370.

For custom groove calculations, see Appendix C, Catalog EPS5370.



Standard, Deep and Type B PolyPak Profile

Table 8. Standard, Deep and Type B PolyPak Gland Dimensions – Inch (Continued)

A Rod Diameter	B (Rod) Groove Diameter	C		D Throat Diameter*	E Piston Diameter**	Build Your Part Number				
		(Std. PP) Groove Width	(Deep & B) Groove Width			Material Code	Gland Depth & Seal Nominal ID (Refer to Profile Nomenclature)	Energizer Code (See Table 3)	Add to the part number for Type B or Deep only	Add to the part number for Type B only
13.375	14.000	0.343	0.688	13.377	13.998	XXXX	31213375	–	625	B
13.500	14.000	0.275	0.618	13.501	13.999	XXXX	25013500	–	562	B
13.500	14.250	0.413	0.688	13.502	14.248	XXXX	37513500	–	625	B
13.500	14.500	0.550	0.825	13.502	14.498	XXXX	50013500	–	750	B
13.500	14.750	0.688	0.963	13.503	14.747	XXXX	62513500	–	875	B
13.500	15.000	0.825	1.375	13.503	14.997	XXXX	75013500	–	1250	B
13.750	14.500	0.413	0.688	13.752	14.498	XXXX	37513750	–	625	B
13.750	15.250	0.825	1.375	13.753	15.247	XXXX	75013750	–	1250	B
14.000	14.500	0.275	0.413	14.001	14.499	XXXX	25014000	–	375	B
14.000	14.750	0.413	0.688	14.002	14.748	XXXX	37514000	–	625	B
14.000	15.000	0.550	0.825	14.002	14.998	XXXX	50014000	–	750	B
14.000	15.250	0.688	1.100	14.003	15.247	XXXX	62514000	–	1000	B
14.000	15.250	0.688	1.100	14.003	15.247	XXXX	62514750	–	1000	B
14.000	15.500	0.825	1.375	14.003	15.497	XXXX	75014000	–	1250	B
14.000	15.750	0.963	1.650	14.004	15.746	XXXX	87514000	–	1500	B
14.000	16.000	1.100	1.650	14.004	15.996	XXXX	100014000	–	1500	B
14.125	14.625	0.275	0.413	14.126	14.624	XXXX	25014125	–	375	B
14.250	14.750	0.275	0.413	14.251	14.749	XXXX	25014250	–	375	B
14.250	15.000	0.413	0.688	14.252	14.998	XXXX	37514250	–	625	B
14.250	15.250	0.550	0.825	14.252	15.248	XXXX	50014250	–	750	B
14.250	15.750	0.825	1.375	14.253	15.747	XXXX	75014250	–	1250	B
14.420	15.420	0.550	0.550	14.422	15.418	XXXX	50014420	–	500	B
14.500	15.000	0.275	0.413	14.501	14.999	XXXX	25014500	–	375	B
14.500	15.000	0.275	0.413	14.501	14.999	XXXX	25014500	–	375	B
14.500	15.250	0.413	0.688	14.502	15.248	XXXX	37514500	–	625	B
14.500	15.500	0.550	0.825	14.502	15.498	XXXX	50014500	–	750	B
14.500	16.000	0.825	1.375	14.503	15.997	XXXX	75014500	–	1250	B
14.750	15.500	0.413	0.688	14.752	15.498	XXXX	37514750	–	625	B
14.750	15.750	0.550	0.825	14.752	15.748	XXXX	50014750	–	750	B
14.750	16.000	0.688	1.100	14.753	15.997	XXXX	62515000	–	1000	B
14.750	16.250	0.825	1.375	14.753	16.247	XXXX	75014750	–	1250	B
14.875	15.500	0.343	0.688	14.877	15.498	XXXX	31214875	–	625	B
15.000	15.500	0.275	0.618	15.001	15.499	XXXX	25015000	–	562	B
15.000	15.750	0.413	0.688	15.002	15.748	XXXX	37515000	–	625	B
15.000	16.000	0.550	0.825	15.002	15.998	XXXX	50015000	–	750	B
15.000	16.500	0.825	1.375	15.003	16.497	XXXX	75015000	–	1250	B
15.000	17.000	1.100	1.650	15.004	16.996	XXXX	100015000	–	1500	B
15.250	16.000	0.413	0.688	15.252	15.998	XXXX	37515250	–	625	B
15.250	16.250	0.550	0.825	15.252	16.248	XXXX	50015250	–	750	B
15.250	16.500	0.688	1.100	15.253	16.497	XXXX	62515250	–	1000	B
15.375	16.000	0.343	0.688	15.377	15.998	XXXX	31215375	–	625	B
15.500	16.000	0.275	0.413	15.501	15.999	XXXX	25015500	–	375	B
15.500	16.250	0.413	0.688	15.502	16.248	XXXX	37515500	–	625	B
15.500	16.500	0.550	0.825	15.502	16.498	XXXX	50015500	–	750	B

*If used with wear rings, refer to wear ring throat diameter, see Section 9, Catalog EPS5370.

**If used with wear rings, refer to wear ring piston diameter, see Section 9, Catalog EPS5370.

For custom groove calculations, see Appendix C, Catalog EPS5370.



Table 8. Standard, Deep and Type B PolyPak Gland Dimensions – Inch (Continued)

A Rod Diameter	B (Rod) Groove Diameter	C		D Throat Diameter*	E Piston Diameter**	Build Your Part Number				
		(Std. PP) Groove Width	(Deep & B) Groove Width			Material Code	Gland Depth & Seal Nominal ID (Refer to Profile Nomenclature)	Energizer Code (See Table 3)	Add to the part number for Type B or Deep only	Add to the part number for Type B only
15.500	16.750	0.688	1.100	15.503	16.747	XXXX	62515500	–	1000	B
15.625	16.250	0.343	0.688	15.627	16.248	XXXX	31215625	–	625	B
15.625	17.125	0.825	1.375	15.628	17.122	XXXX	75015625	–	1250	B
15.750	16.250	0.275	0.618	15.751	16.249	XXXX	25015750	–	562	B
15.750	16.500	0.413	0.688	15.752	16.498	XXXX	37515750	–	625	B
15.750	16.750	0.550	0.825	15.752	16.748	XXXX	50015750	–	750	B
15.875	16.500	0.343	0.688	15.877	16.498	XXXX	31215875	–	625	B
16.000	16.500	0.275	0.275	16.001	16.499	XXXX	25016000	–	250	B
16.000	16.500	0.275	0.413	16.001	16.499	XXXX	25016000	–	375	B
16.000	16.750	0.413	0.688	16.002	16.748	XXXX	37516000	–	625	B
16.000	17.000	0.550	0.825	16.002	16.998	XXXX	50016000	–	750	B
16.000	17.500	0.825	1.375	16.003	17.497	XXXX	75016000	–	1250	B
16.000	17.750	0.963	1.375	16.004	17.746	XXXX	87516000	–	1250	B
16.000	17.750	0.963	1.513	16.004	17.746	XXXX	87516000	–	1375	B
16.000	18.000	1.100	1.375	16.004	17.996	XXXX	100016000	–	1250	B
16.250	17.000	0.413	0.688	16.252	16.998	XXXX	37516250	–	625	B
16.263	16.763	0.275	0.413	16.264	16.762	XXXX	25016263	–	375	B
16.500	17.250	0.413	0.688	16.502	17.248	XXXX	37516500	–	625	B
16.500	17.500	0.550	0.825	16.502	17.498	XXXX	50016500	–	750	B
16.500	18.000	0.825	0.825	16.503	17.997	XXXX	75016500	–	750	B
16.500	18.000	0.825	1.375	16.503	17.997	XXXX	75016500	–	1250	B
16.750	17.750	0.550	0.825	16.752	17.748	XXXX	50016750	–	750	B
16.750	18.000	0.688	1.100	16.753	17.997	XXXX	62516750	–	1000	B
17.000	18.000	0.550	0.825	17.002	17.998	XXXX	50017000	–	750	B
17.000	19.000	1.100	1.375	17.004	18.996	XXXX	100017000	–	1250	B
17.250	18.000	0.413	0.688	17.252	17.998	XXXX	37517250	–	625	B
17.500	18.500	0.550	0.825	17.502	18.498	XXXX	50017500	–	750	B
17.500	18.750	0.688	1.100	17.503	18.747	XXXX	62517500	–	1000	B
17.500	19.500	1.100	1.650	17.504	19.496	XXXX	100017500	–	1500	B
17.625	19.125	0.825	1.375	17.628	19.122	XXXX	75017625	–	1250	B
17.750	18.500	0.413	0.550	17.752	18.498	XXXX	37517750	–	500	B
17.750	19.000	0.688	1.100	17.753	18.997	XXXX	62517750	–	1000	B
17.875	18.500	0.343	0.550	17.877	18.498	XXXX	31217875	–	500	B
17.875	18.563	0.377	0.688	17.877	18.561	XXXX	34301062	–	625	B
18.000	19.000	0.550	0.825	18.002	18.998	XXXX	50018000	–	750	B
18.000	19.250	0.688	1.375	18.003	19.247	XXXX	62518000	–	1250	B
18.000	19.500	0.825	1.375	18.003	19.497	XXXX	75018000	–	1250	B
18.000	19.750	0.963	1.375	18.004	19.746	XXXX	87518000	–	1250	B
18.000	20.000	1.100	1.650	18.004	19.996	XXXX	100018000	–	1500	B
18.187	18.937	0.413	0.688	18.189	18.935	XXXX	37518187	–	625	B
18.250	18.750	0.275	0.413	18.251	18.749	XXXX	25018250	–	375	B
18.500	19.500	0.550	0.825	18.502	19.498	XXXX	50018500	–	750	B
18.500	20.500	1.100	1.650	18.504	20.496	XXXX	100018500	–	1500	B
18.750	20.000	0.688	1.100	18.753	19.997	XXXX	62518750	–	1000	B

*If used with wear rings, refer to wear ring throat diameter, see Section 9, Catalog EPS5370.

**If used with wear rings, refer to wear ring piston diameter, see Section 9, Catalog EPS5370.

For custom groove calculations, see Appendix C, Catalog EPS5370.

Standard, Deep and Type B PolyPak Profile

Table 8. Standard, Deep and Type B PolyPak Gland Dimensions – Inch (Continued)

A Rod Diameter	B (Rod) Groove Diameter	C		D Throat Diameter*	E Piston Diameter**	Build Your Part Number				
		(Std. PP) Groove Width	(Deep & B) Groove Width			Material Code	Gland Depth & Seal Nominal ID (Refer to Profile Nomenclature)	Energizer Code (See Table 3)	Add to the part number for Type B or Deep only	Add to the part number for Type B only
19.000	19.500	0.275	0.413	19.001	19.499	XXXX	25019000	–	375	B
19.000	20.000	0.550	0.825	19.002	19.998	XXXX	50019000	–	750	B
19.000	20.500	0.825	1.375	19.003	20.497	XXXX	75019000	–	1250	B
19.250	20.000	0.413	0.688	19.252	19.998	XXXX	37519250	–	625	B
19.250	20.500	0.688	1.100	19.253	20.497	XXXX	62519250	–	1000	B
19.250	21.000	0.963	1.513	19.254	20.996	XXXX	87519250	–	1375	B
19.375	20.250	0.481	0.550	19.377	20.248	XXXX	43719375	–	500	B
19.500	20.000	0.275	0.275	19.501	19.999	XXXX	25019500	–	250	B
19.500	20.000	0.275	0.343	19.501	19.999	XXXX	25019500	–	312	B
19.500	20.250	0.413	0.688	19.502	20.248	XXXX	37519500	–	625	B
19.500	20.500	0.550	0.825	19.502	20.498	XXXX	50019500	–	750	B
19.625	20.625	0.550	0.825	19.627	20.623	XXXX	50019625	–	750	B
19.750	21.000	0.688	1.100	19.753	20.997	XXXX	62519750	–	1000	B
20.000	21.000	0.550	0.825	20.002	20.998	XXXX	50020000	–	750	B
20.000	21.250	0.688	1.100	20.003	21.247	XXXX	62520000	–	1000	B
20.000	21.500	0.825	1.100	20.003	21.497	XXXX	75020000	–	1000	B
20.000	21.500	0.825	1.375	20.003	21.497	XXXX	75020000	–	1250	B
20.000	21.750	0.963	1.513	20.004	21.746	XXXX	87520000	–	1375	B
20.000	22.000	1.100	0.963	20.004	21.996	XXXX	100020000	–	875	B
20.000	22.000	1.100	1.650	20.004	21.996	XXXX	100020000	–	1500	B
20.250	21.250	0.550	0.825	20.252	21.248	XXXX	50020250	–	750	B
20.500	21.500	0.550	0.825	20.502	21.498	XXXX	50020500	–	750	B
20.500	22.000	0.825	1.100	20.503	21.997	XXXX	75020500	–	1000	B
20.750	21.500	0.413	0.550	20.752	21.498	XXXX	37520750	–	500	B
21.000	21.500	0.275	0.343	21.001	21.499	XXXX	25021000	–	312	B
21.000	22.000	0.550	0.825	21.002	21.998	XXXX	50021000	–	750	B
21.000	22.500	0.825	1.375	21.003	22.497	XXXX	75021000	–	1250	B
21.500	22.500	0.550	0.825	21.502	22.498	XXXX	50021500	–	750	B
21.500	23.000	0.825	1.375	21.503	22.997	XXXX	75021500	–	1250	B
21.750	22.250	0.275	0.413	21.751	22.249	XXXX	25021750	–	375	B
21.875	22.875	0.550	0.825	21.877	22.873	XXXX	50021875	–	750	B
22.000	23.000	0.550	0.825	22.002	22.998	XXXX	50022000	–	750	B
22.000	23.500	0.825	1.375	22.003	23.497	XXXX	75022000	–	1250	B
22.000	24.000	1.100	1.513	22.004	23.996	XXXX	100022000	–	1375	B
22.062	22.562	0.275	0.413	22.063	22.561	XXXX	25022062	–	375	B
22.500	23.000	0.275	0.343	22.501	22.999	XXXX	25022500	–	312	B
22.500	24.000	0.825	1.375	22.503	23.997	XXXX	75022500	–	1250	B
23.000	23.500	0.275	0.413	23.001	23.499	XXXX	25023000	–	375	B
23.000	23.750	0.413	0.688	23.002	23.748	XXXX	37523000	–	625	B
23.000	24.000	0.550	0.825	23.002	23.998	XXXX	50023000	–	750	B
23.250	24.000	0.413	0.688	23.252	23.998	XXXX	37523250	–	625	B
23.375	25.375	1.100	1.650	23.379	25.371	XXXX	100023375	–	1500	B
23.500	24.000	0.275	0.413	23.501	23.999	XXXX	25023500	–	375	B
23.500	24.500	0.550	0.825	23.502	24.498	XXXX	50023500	–	750	B

*If used with wear rings, refer to wear ring throat diameter, see Section 9, Catalog EPS5370.

**If used with wear rings, refer to wear ring piston diameter, see Section 9, Catalog EPS5370.

For custom groove calculations, see Appendix C, Catalog EPS5370.



Table 8. Standard, Deep and Type B PolyPak Gland Dimensions – Inch (Continued)

A Rod Diameter	B (Rod) Groove Diameter	C		D Throat Diameter*	E Piston Diameter**	Build Your Part Number				
		(Std. PP) Groove Width	(Deep & B) Groove Width			Material Code	Gland Depth & Seal Nominal ID (Refer to Profile Nomenclature)	Energizer Code (See Table 3)	Add to the part number for Type B or Deep only	Add to the part number for Type B only
23.500	25.000	0.825	1.375	23.503	24.997	XXXX	75023500	–	1250	B
23.750	24.250	0.275	0.413	23.751	24.249	XXXX	25023750	–	375	B
24.000	24.500	0.275	0.413	24.001	24.499	XXXX	25024000	–	375	B
24.000	25.000	0.550	0.825	24.002	24.998	XXXX	50024000	–	750	B
24.000	25.500	0.825	1.375	24.003	25.497	XXXX	75024000	–	1250	B
24.000	25.750	0.963	1.375	24.004	25.746	XXXX	87524000	–	1250	B
24.000	26.000	1.100	1.650	24.004	25.996	XXXX	100024000	–	1500	B
24.500	25.000	0.275	0.413	24.501	24.999	XXXX	25024500	–	375	B
24.500	25.500	0.550	0.825	24.502	25.498	XXXX	50024500	–	750	B
24.750	26.000	0.688	1.100	24.753	25.997	XXXX	62524750	–	1000	B
24.875	25.875	0.550	0.825	24.877	25.873	XXXX	50024875	–	750	B
25.000	25.750	0.413	0.688	25.002	25.748	XXXX	37525000	–	625	B
25.000	26.000	0.550	0.825	25.002	25.998	XXXX	50025000	–	750	B
25.000	27.000	1.100	1.477	25.004	26.996	XXXX	100025000	–	1343	B
25.250	25.750	0.275	0.413	25.251	25.749	XXXX	25025250	–	375	B
25.250	26.000	0.413	0.688	25.252	25.998	XXXX	37525250	–	625	B
25.250	26.250	0.550	0.825	25.252	26.248	XXXX	50025250	–	750	B
25.500	27.000	0.825	1.375	25.503	26.997	XXXX	75025500	–	1250	B
26.000	26.750	0.413	0.688	26.002	26.748	XXXX	37526000	–	625	B
26.000	27.000	0.550	0.825	26.002	26.998	XXXX	50026000	–	750	B
26.000	27.500	0.825	1.375	26.003	27.497	XXXX	75026000	–	1250	B
26.125	27.125	0.550	0.825	26.127	27.123	XXXX	50026125	–	750	B
26.500	27.500	0.550	0.825	26.502	27.498	XXXX	50026500	–	750	B
26.718	27.218	0.275	0.343	26.719	27.217	XXXX	25026718	–	312	B
27.000	28.000	0.550	0.825	27.002	27.998	XXXX	50027000	–	750	B
27.000	29.000	1.100	1.650	27.004	28.996	XXXX	100027000	–	1500	B
27.250	28.000	0.413	0.688	27.252	27.998	XXXX	37527250	–	625	B
27.500	28.000	0.275	0.413	27.501	27.999	XXXX	25027500	–	375	B
27.500	28.500	0.550	0.825	27.502	28.498	XXXX	50027500	–	750	B
27.625	28.625	0.550	0.825	27.627	28.623	XXXX	50027625	–	750	B
28.000	29.000	0.550	0.825	28.002	28.998	XXXX	50028000	–	750	B
28.000	30.000	1.100	1.650	28.004	29.996	XXXX	100028000	–	1500	B
28.187	29.187	0.550	0.825	28.189	29.185	XXXX	50028187	–	750	B
28.500	29.500	0.550	0.825	28.502	29.498	XXXX	50028500	–	750	B
28.500	29.500	0.550	0.825	28.502	29.498	XXXX	50028500	–	750	B
28.750	29.500	0.413	0.688	28.752	29.498	XXXX	37528750	–	625	B
29.000	30.000	0.550	0.825	29.002	29.998	XXXX	50029000	–	750	B
29.000	31.000	1.100	1.650	29.004	30.996	XXXX	100029000	–	1500	B
29.750	30.750	0.550	0.825	29.752	30.748	XXXX	50029750	–	750	B
30.000	30.750	0.413	0.688	30.002	30.748	XXXX	37530000	–	625	B
30.000	30.750	0.413	0.688	30.002	30.748	XXXX	37531750	–	625	B
30.000	31.000	0.550	0.687	30.002	30.998	XXXX	50030000	–	625	B
30.000	31.250	0.688	1.100	30.003	31.247	XXXX	62530000	–	1000	B
30.000	32.000	1.100	1.650	30.004	31.996	XXXX	100030000	–	1500	B

*If used with wear rings, refer to wear ring throat diameter, see Section 9, Catalog EPS5370.

**If used with wear rings, refer to wear ring piston diameter, see Section 9, Catalog EPS5370.

For custom groove calculations, see Appendix C, Catalog EPS5370.

Standard, Deep and Type B PolyPak Profile

Table 8. Standard, Deep and Type B PolyPak Gland Dimensions – Inch (Continued)

A Rod Diameter	B (Rod) Groove Diameter	C		D Throat Diameter*	E Piston Diameter**	Build Your Part Number				
		(Std. PP) Groove Width	(Deep & B) Groove Width			Material Code	Gland Depth & Seal Nominal ID (Refer to Profile Nomenclature)	Energizer Code (See Table 3)	Add to the part number for Type B or Deep only	Add to the part number for Type B only
30.250	31.250	0.550	0.825	30.252	31.248	XXXX	50030250	–	750	B
30.375	31.375	0.550	0.825	30.377	31.373	XXXX	50030375	–	750	B
30.750	31.750	0.550	0.825	30.752	31.748	XXXX	50030750	–	750	B
31.000	32.000	0.550	0.825	31.002	31.998	XXXX	50031000	–	750	B
31.000	33.000	1.100	1.650	31.004	32.996	XXXX	100031000	–	1500	B
31.500	32.250	0.413	0.688	31.502	32.248	XXXX	37531500	–	625	B
31.500	32.500	0.550	0.825	31.502	32.498	XXXX	50031500	–	750	B
31.750	32.500	0.413	0.688	31.752	32.498	XXXX	37536250	–	625	B
32.000	32.500	0.275	0.413	32.001	32.499	XXXX	25032000	–	375	B
32.000	33.000	0.550	0.825	32.002	32.998	XXXX	50032000	–	750	B
32.000	33.500	0.825	0.963	32.003	33.497	XXXX	75032000	–	875	B
33.000	34.000	0.550	0.825	33.002	33.998	XXXX	50033000	–	750	B
34.000	34.750	0.413	0.688	34.002	34.748	XXXX	37534000	–	625	B
34.500	35.000	0.275	0.413	34.501	34.999	XXXX	25034500	–	375	B
34.500	35.500	0.550	0.825	34.502	35.498	XXXX	50034500	–	750	B
35.000	35.750	0.413	0.688	35.002	35.748	XXXX	37535000	–	625	B
35.750	36.750	0.550	0.825	35.752	36.748	XXXX	50035750	–	750	B
36.000	36.750	0.413	0.688	36.002	36.748	XXXX	37536000	–	625	B
36.000	37.000	0.550	0.825	36.002	36.998	XXXX	50036000	–	750	B
37.000	37.750	0.413	0.688	37.002	37.748	XXXX	37537000	–	625	B
37.000	38.000	0.550	0.825	37.002	37.998	XXXX	50037000	–	750	B
37.500	38.250	0.413	0.688	37.502	38.248	XXXX	37537500	–	625	B
38.000	39.000	0.550	0.825	38.002	38.998	XXXX	50038000	–	750	B
38.250	39.250	0.550	0.825	38.252	39.248	XXXX	50038250	–	750	B
38.500	39.250	0.413	0.688	38.502	39.248	XXXX	37538500	–	625	B
38.750	39.750	0.550	0.825	38.752	39.748	XXXX	50038750	–	750	B
39.135	40.135	0.550	0.825	39.137	40.133	XXXX	50039135	–	750	B
40.000	40.750	0.413	0.688	40.002	40.748	XXXX	37540000	–	625	B
41.000	42.000	0.550	0.825	41.002	41.998	XXXX	50041000	–	750	B
41.485	42.485	0.550	0.825	41.487	42.483	XXXX	50041485	–	750	B
41.750	42.750	0.550	0.825	41.752	42.748	XXXX	50041750	–	750	B
42.000	43.000	0.550	0.688	42.002	42.998	XXXX	50042000	–	625	B
42.000	43.000	0.550	0.825	42.002	42.998	XXXX	50042000	–	750	B
42.267	43.267	0.550	0.825	42.269	43.265	XXXX	50042267	–	750	B
43.500	44.500	0.550	0.825	43.502	44.498	XXXX	50043500	–	750	B
44.125	45.125	0.550	0.825	44.127	45.123	XXXX	50044125	–	750	B
44.618	45.618	0.550	0.825	44.620	45.616	XXXX	50044618	–	750	B
46.250	47.250	0.550	0.825	46.252	47.248	XXXX	50046250	–	750	B
47.500	48.500	0.550	0.825	47.502	48.498	XXXX	50047500	–	750	B

*If used with wear rings, refer to wear ring throat diameter, see Section 9, Catalog EPS5370.

**If used with wear rings, refer to wear ring piston diameter, see Section 9, Catalog EPS5370.

For custom groove calculations, see Appendix C, Catalog EPS5370.

NOTE: For sizes larger than those shown in the table, please contact your local Parker Engineered Materials Group sealing representative.



North America

EPS Division, Headquarters

Salt Lake City, Utah

phone 801 972 3000

fax 801 973 4019



Parker Hannifin Corporation
Engineered Polymer Systems Division

2220 South 3600 West
Salt Lake City, UT 84119

phone 801 972 3000

fax 801 973 4019

www.parker.com/eps